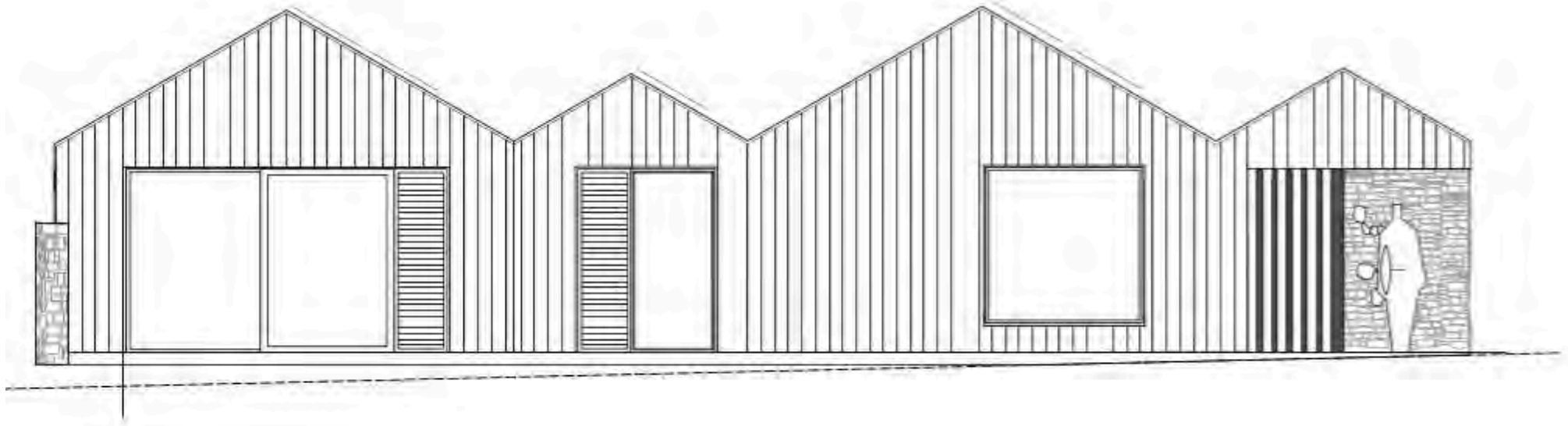
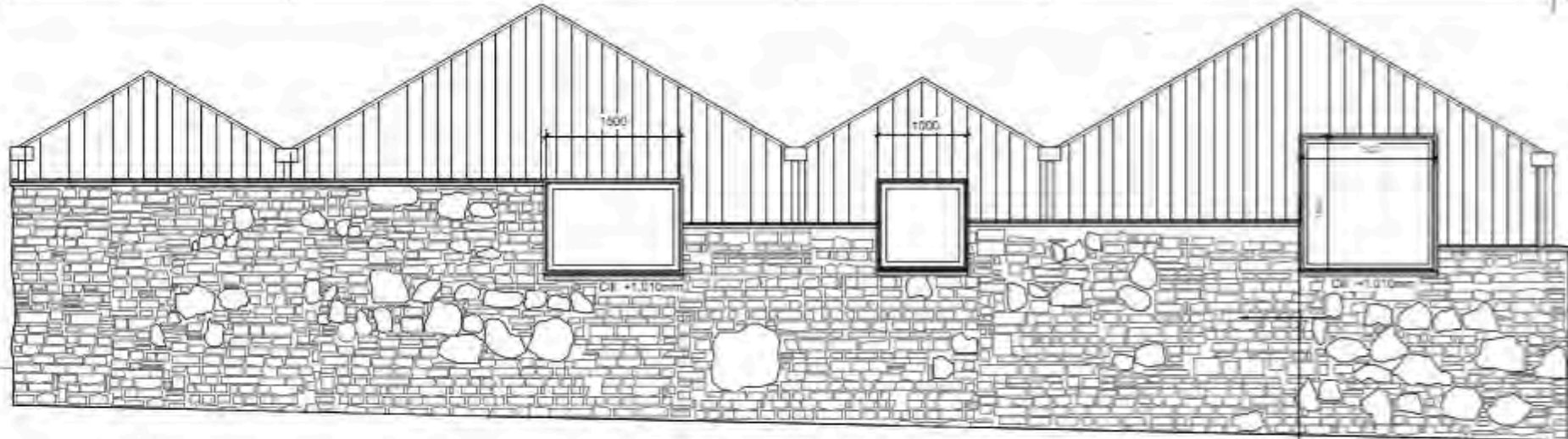


Thoughts on new build.....a house



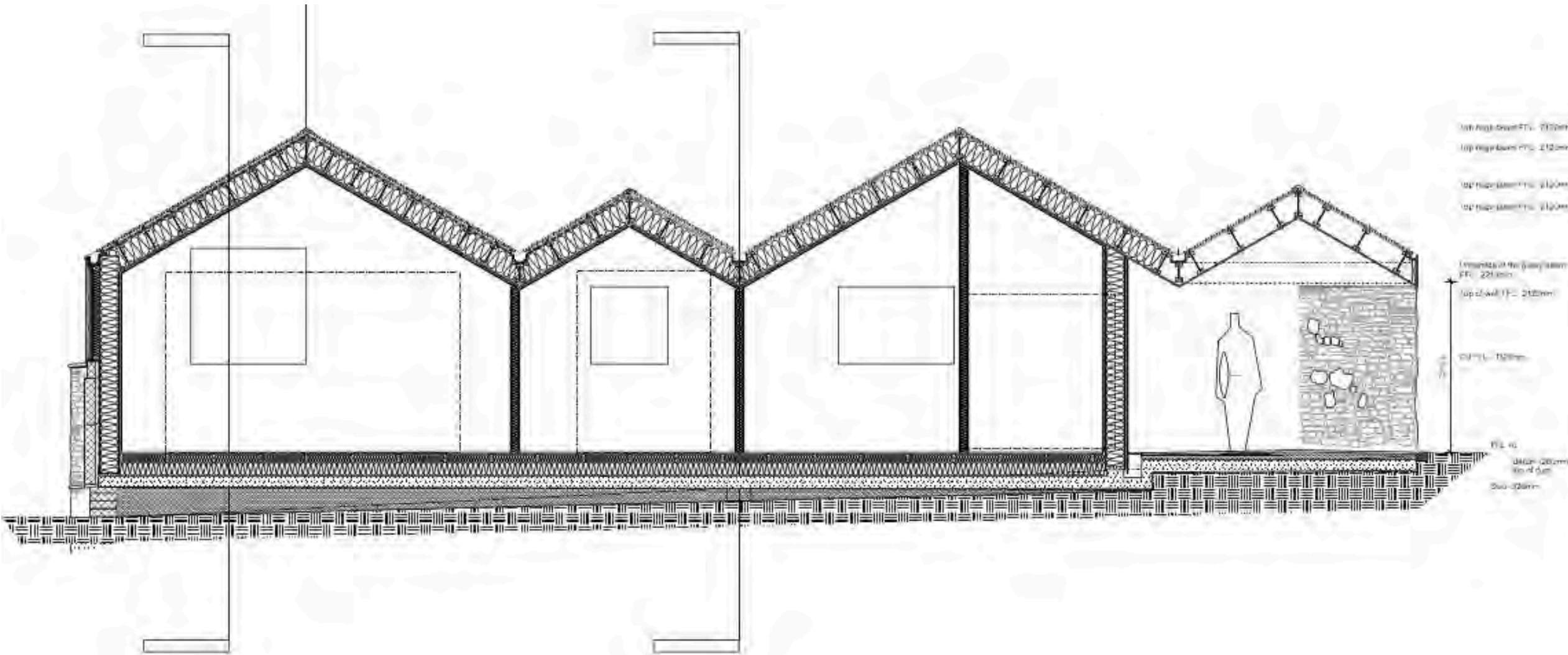


FRONT ELEVATION 1:25



EAST ELEVATION 1:25BA1





Top High Beam FFL: 2100mm

Top High Beam FFL: 2100mm

Top High Beam FFL: 2100mm

Top High Beam FFL: 2100mm

Top of the Ceiling Beam FFL: 2210mm

Top of Wall FFL: 2100mm

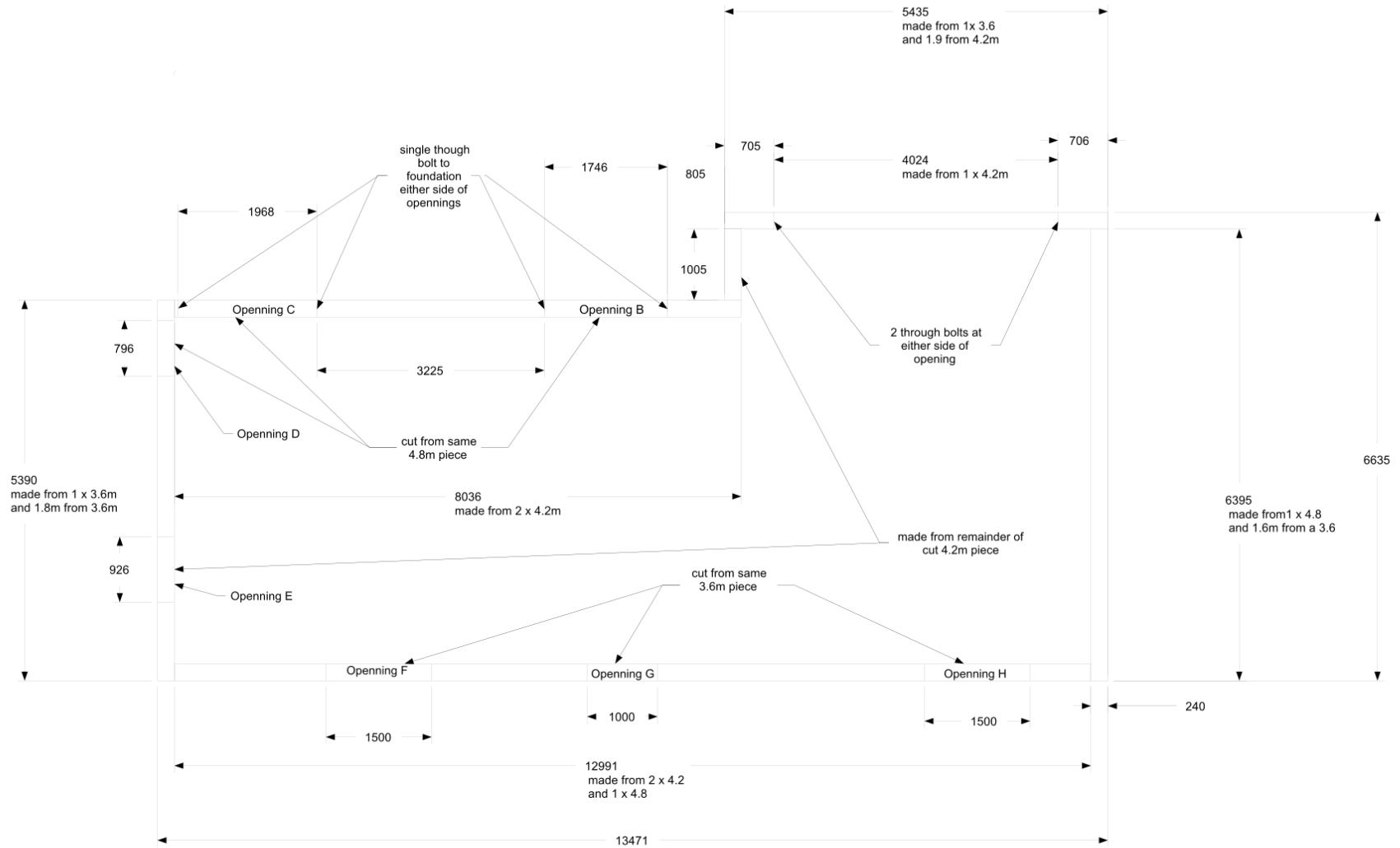
OSFL: 1800mm

FL: 40

SLAB: 200mm

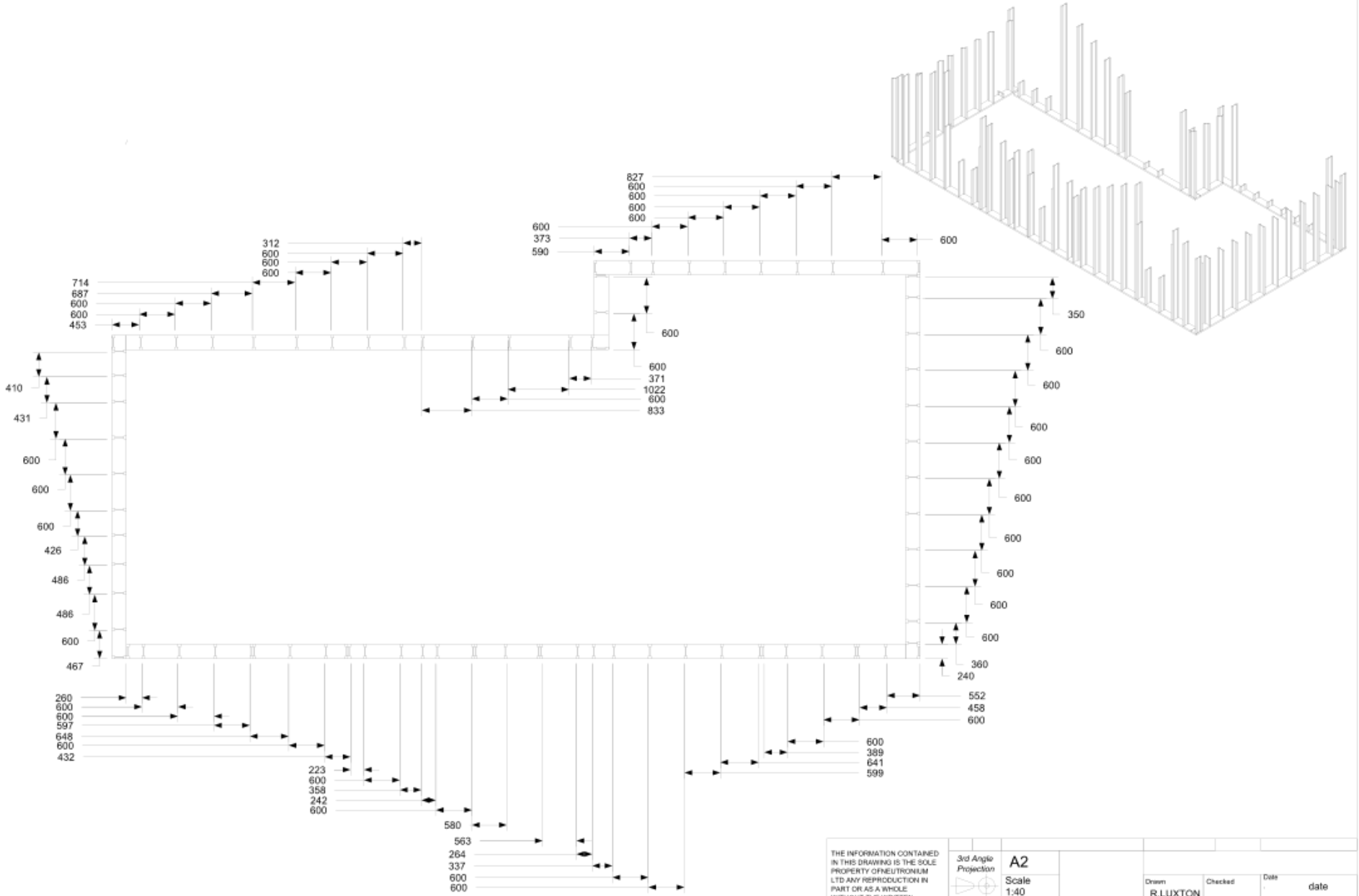
40 of 50mm

500-120mm



- NOTES:
 1) Apply compaband to underside of soleplate all round
 2) Through bolts into foundation at 2m intervals except where marked
 3) Sole plate cut list

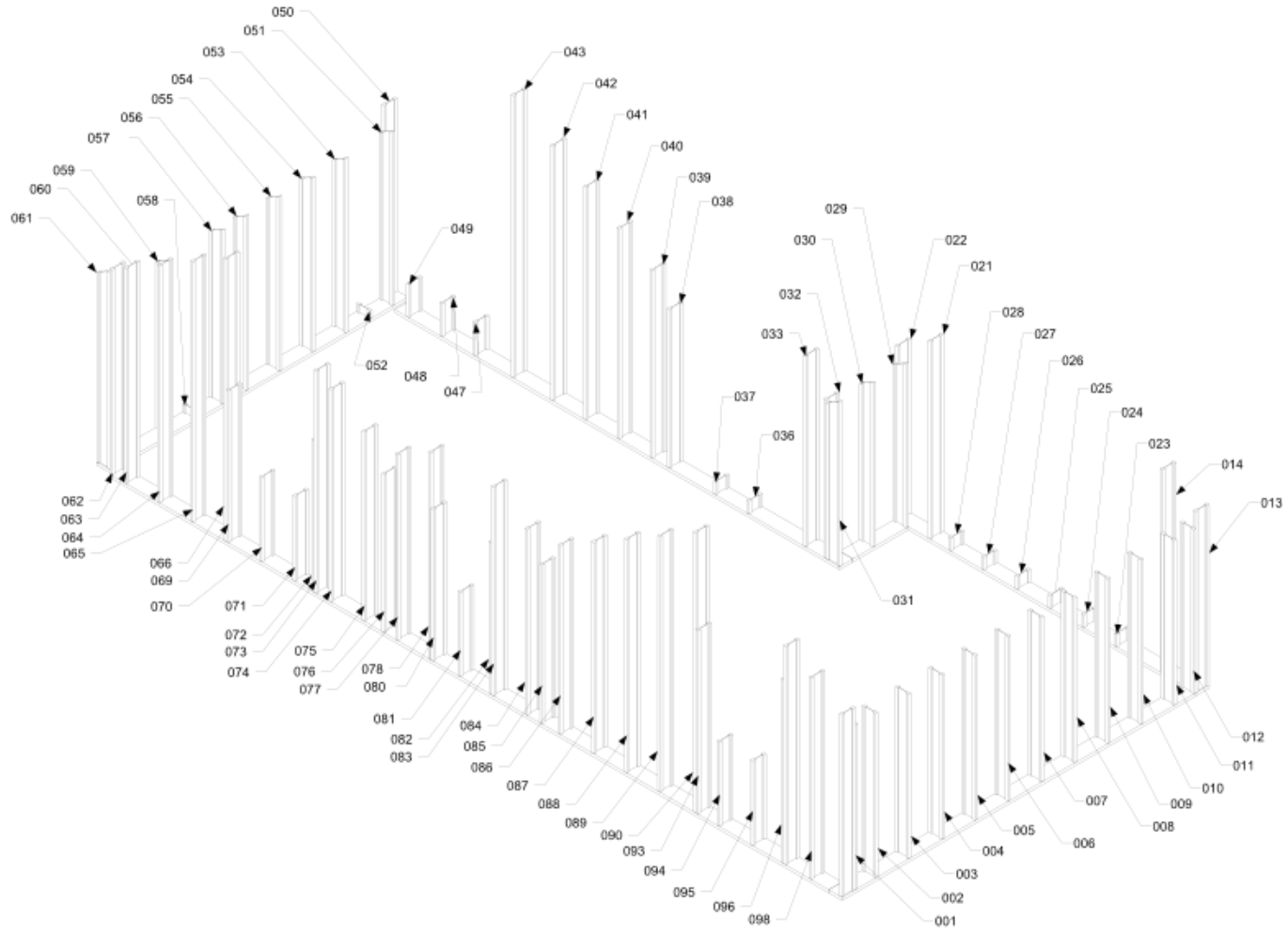
THE INFORMATION CONTAINED IN THIS DRAWING IS THE SOLE PROPERTY OF NEUTRONIUM LTD ANY REPRODUCTION IN PART OR AS A WHOLE WITHOUT THE WRITTEN PERMISSION OF NEUTRONIUM LTD IS PROHIBITED. COPYRIGHT NEUTRONIUM LTD. 2014	3rd Angle Projection	A2	Drawn	Checked	Date
		Scale 1:40	R. LUXTON		date
	NEUTRONIUM LTD	Title sole plate layout	Sheet 1 of 10	Rev. 1	Doc.Nr 001



THE INFORMATION CONTAINED IN THIS DRAWING IS THE SOLE PROPERTY OF NEUTRONIUM LTD ANY REPRODUCTION IN PART OR AS A WHOLE WITHOUT THE WRITTEN PERMISSION OF NEUTRONIUM LTD IS PROHIBITED. COPYRIGHT NEUTRONIUM LTD. 2014

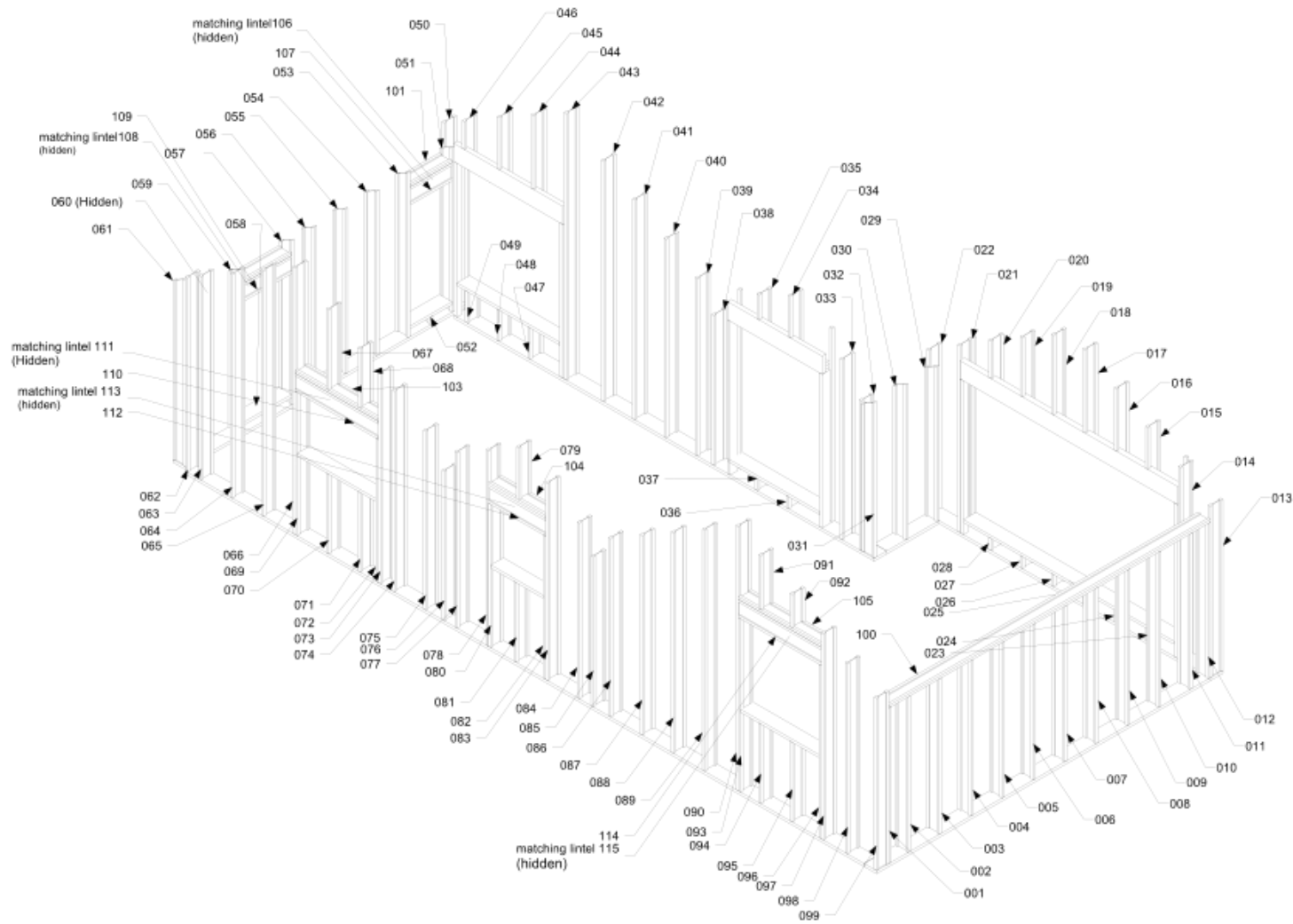
3rd Angle Projection	A2
Scale	1:40
NEUTRONIUM LTD	

Drawn	Checked	Date	date
R.LUXTON			
Title	SHEET 2 OF 10		Rev. 1
sole plate layout	Doc: Nr 001		



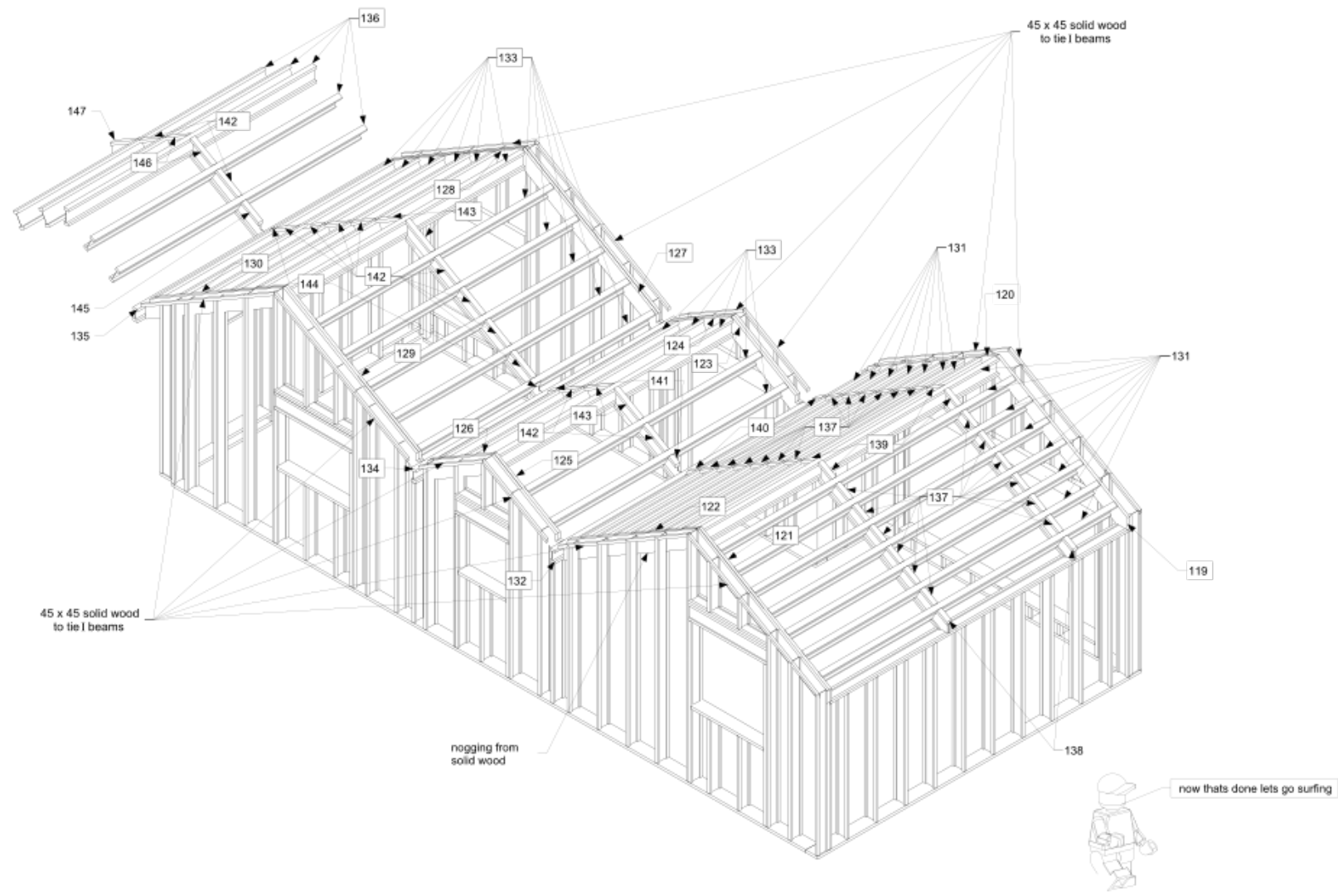
NOTES:
1) beam numbered for assembly

THE INFORMATION CONTAINED IN THIS DRAWING IS THE SOLE PROPERTY OF NEUTRONIUM LTD ANY REPRODUCTION IN PART OR AS A WHOLE WITHOUT THE WRITTEN PERMISSION OF NEUTRONIUM LTD IS PROHIBITED. COPYRIGHT NEUTRONIUM LTD. 2014	3rd Angle Projection	A2	Drawn	Checked	Date	date
		Scale 1:40	R.LUXTON			
	NEUTRONIUM LTD		Title	sole plate layout		Sheet 3 of 10
					Doc. Nr 001	



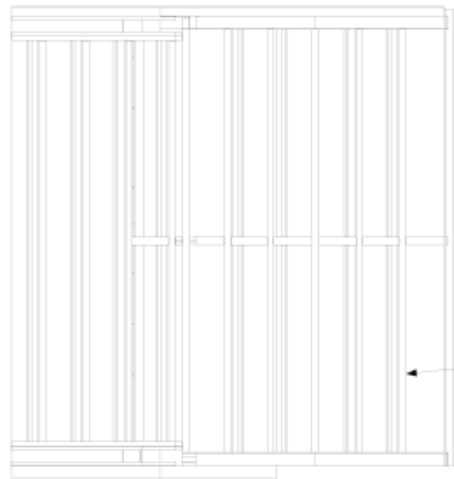
NOTES:
1) beam numbered for assembly

THE INFORMATION CONTAINED IN THIS DRAWING IS THE SOLE PROPERTY OF NEUTRONIUM LTD ANY REPRODUCTION IN PART OR AS A WHOLE WITHOUT THE WRITTEN PERMISSION OF NEUTRONIUM LTD IS PROHIBITED. COPYRIGHT NEUTRONIUM LTD. 2014	3rd Angle Projection	A2	Drawn	Checked	Date	date
		Scale 1:40	R.LUXTON			
	NEUTRONIUM LTD		Title	Wall I Beam Numbering scheme		Sheet 4 of 10
				Doc. Nr 001		



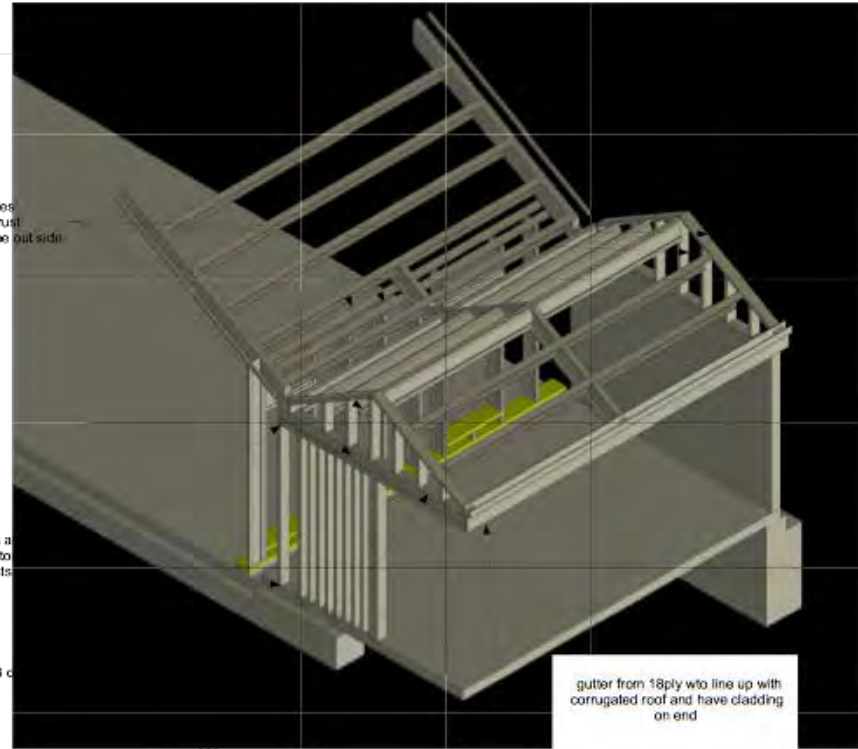
NOTES:
1) beam numbering for assembly

THE INFORMATION CONTAINED IN THIS DRAWING IS THE SOLE PROPERTY OF NEUTRONIUM LTD ANY REPRODUCTION IN PART OR AS A WHOLE WITHOUT THE WRITTEN PERMISSION OF NEUTRONIUM LTD IS PROHIBITED. COPYRIGHT NEUTRONIUM LTD. 2014	3rd Angle Projection	A2	Drawn	Checked	Date	date
		Scale 1:40	R.LUXTON			
	NEUTRONIUM LTD		Roof I Beam and hanger Numbering scheme		Sheet 5 of 10	Rev.
				Doc. Nr 001		



Perlins at 600mm spacing
from ridge beam
Hung on hangers with all
nail holes filled

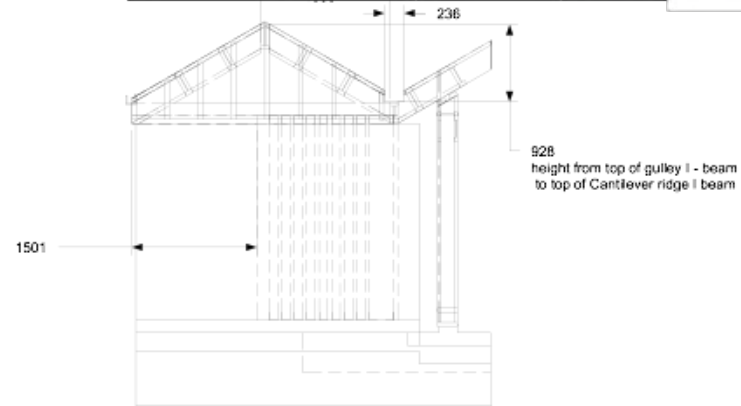
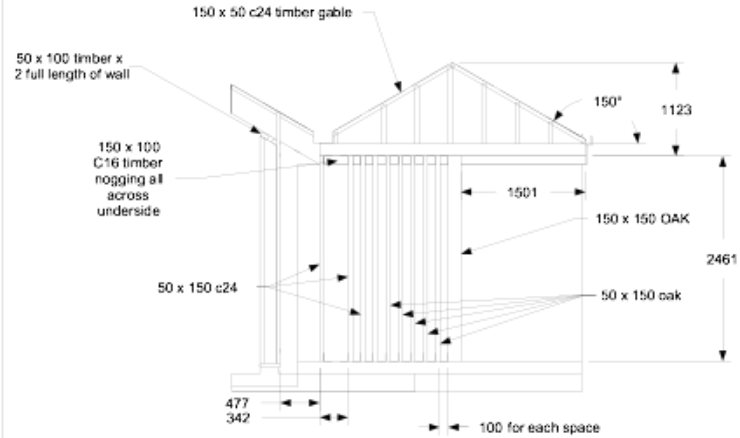
8mm ply end plates
full height of the truss
4 off but not shown on the outside



L brackets at
top and bottom
for all posts

3 c

gutter from 18ply wto line up with
corrugated roof and have cladding
on end



NOTES:

- 1) All dims in millimeters
- 2) L - brackets at top and bottom of all 150x 50 posts and 150x150 post to resist uplift
- 3) Cantilever gable boarded in 19mm OSB

THE INFORMATION CONTAINED
IN THIS DRAWING IS THE SOLE
PROPERTY OF NEUTRONIUM
LTD ANY REPRODUCTION IN
PART OR AS A WHOLE
WITHOUT THE WRITTEN
PERMISSION OF NEUTRONIUM
LTD IS PROHIBITED.
COPYRIGHT NEUTRONIUM LTD
2014



A2

Scale
1:1

NEUTRONIUM LTD

Drawn
R. LUXTON

Checked

Date

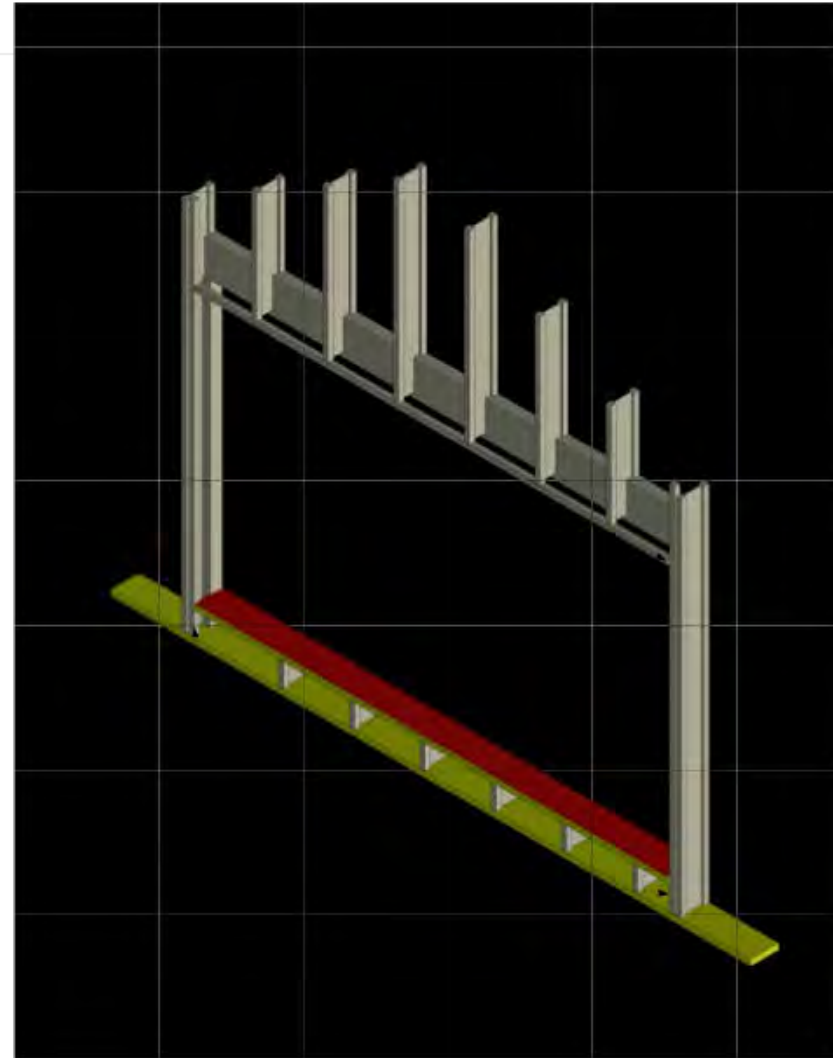
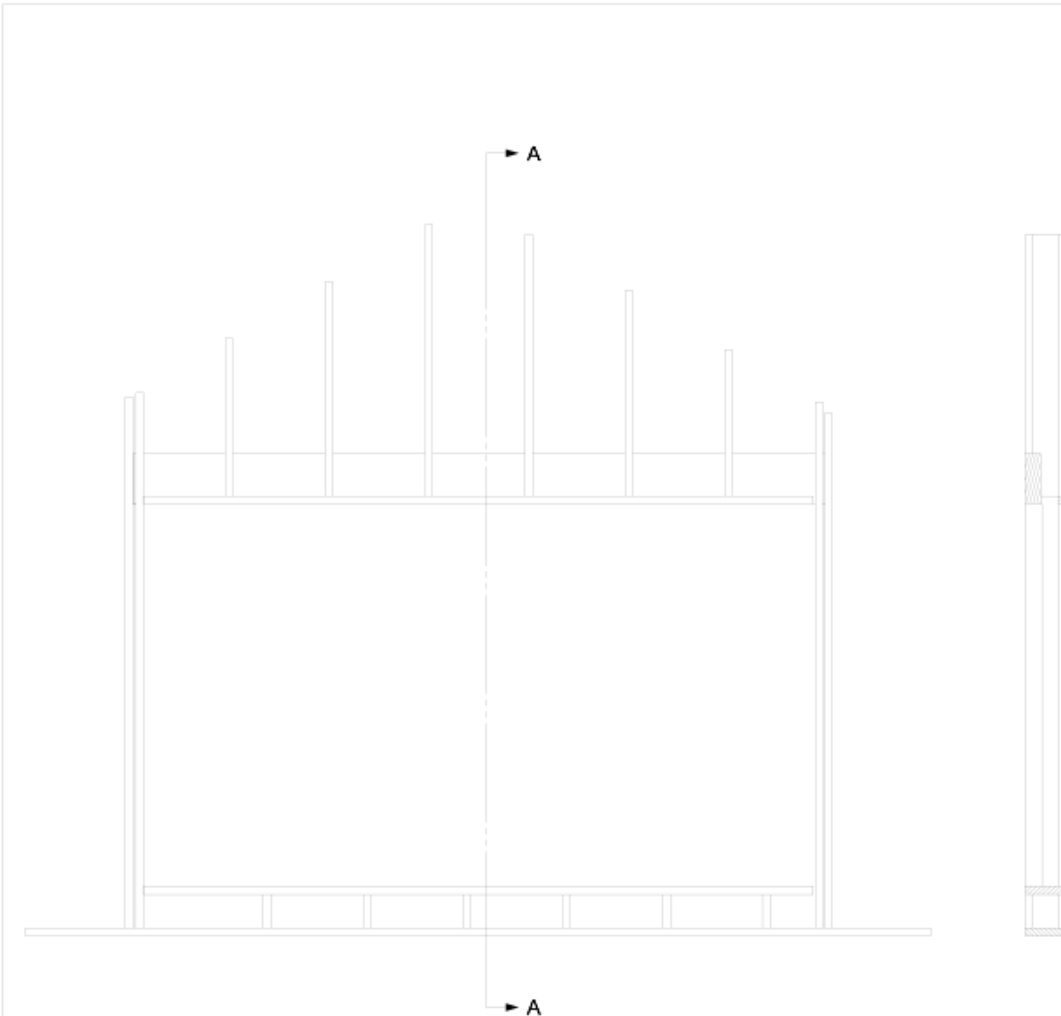
date

Title
**Cantilever end
construction**

Sheet 6 of 10

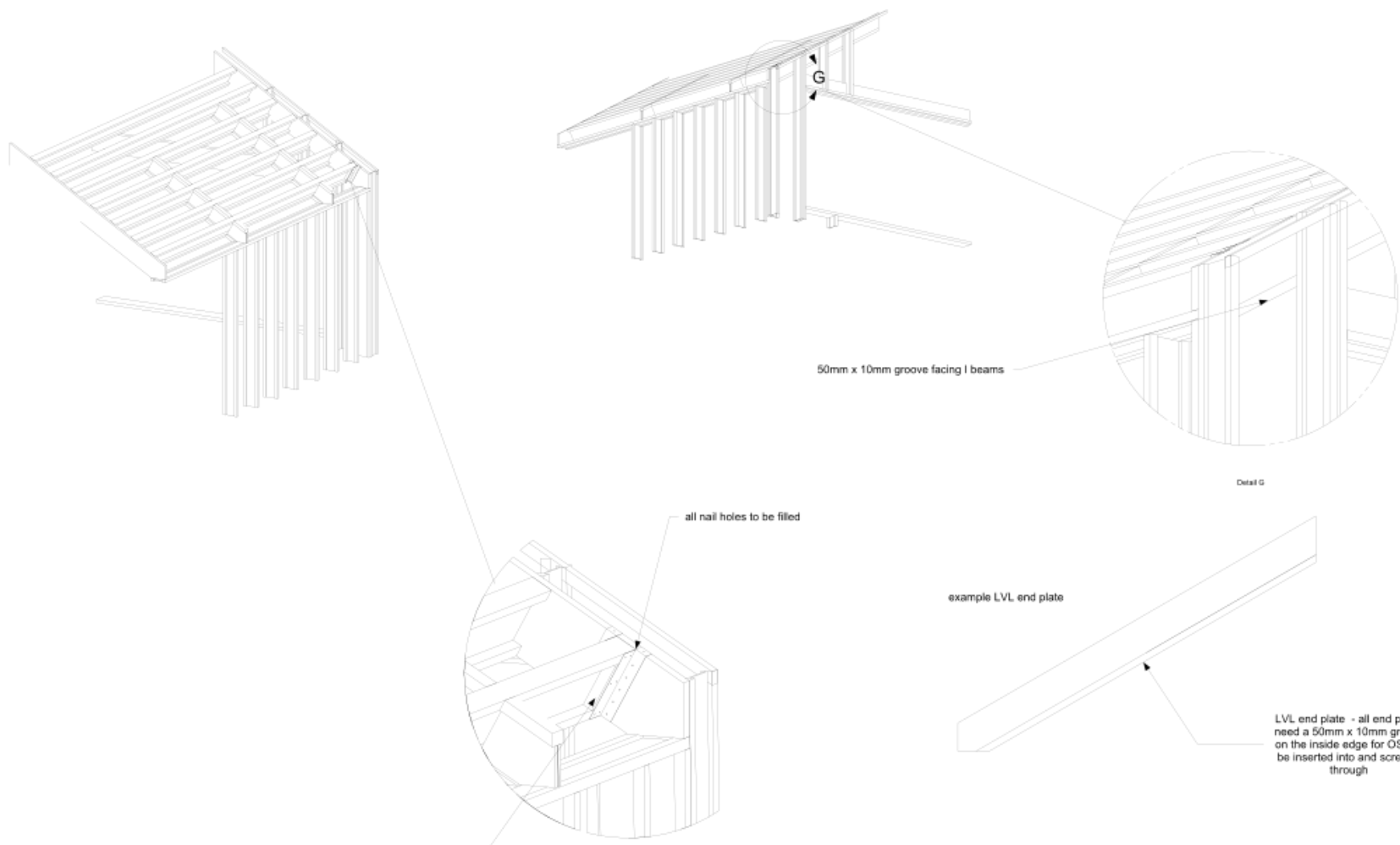
Rev. **1**

Doc Nr
001



- NOTES:
 1) All dims in millimeters
 2) Lintel detail for opening A, B and C
 3) 47 x 72 timbers by cutting 150 x 47 timber in half

THE INFORMATION CONTAINED IN THIS DRAWING IS THE SOLE PROPERTY OF NEUTRONIUM LTD ANY REPRODUCTION IN PART OR AS A WHOLE WITHOUT THE WRITTEN PERMISSION OF NEUTRONIUM LTD IS PROHIBITED. COPYRIGHT NEUTRONIUM LTD 2014	3rd Angle Projection 	A2 Scale 1:1	Drawn R LUXTON	Checked 	Date date
	NEUTRONIUM LTD		Title LVL lintel construction	Sheet 1 of 10	Rev. 1
			Doc No 001		



NOTES:
1) All dims in millimeters

reinforcing blocks on both side and nailed though 3 time
2 from one side and once from the other

THE INFORMATION CONTAINED IN THIS DRAWING IS THE SOLE PROPERTY OF NEUTRONIUM LTD ANY REPRODUCTION IN PART OR AS A WHOLE WITHOUT THE WRITTEN PERMISSION OF NEUTRONIUM LTD IS PROHIBITED. COPYRIGHT NEUTRONIUM LTD. 2014

3rd Angle Projection	A2	Drawn	Checked	Date	date
	Scale 1:1	R.LUXTON			
NEUTRONIUM LTD		Title		Sheet 10 of 10	Rev. 1
		Gable wall plate/purlin interface		Doc: NR 001	



















GAULOISES
cigarette
of
France





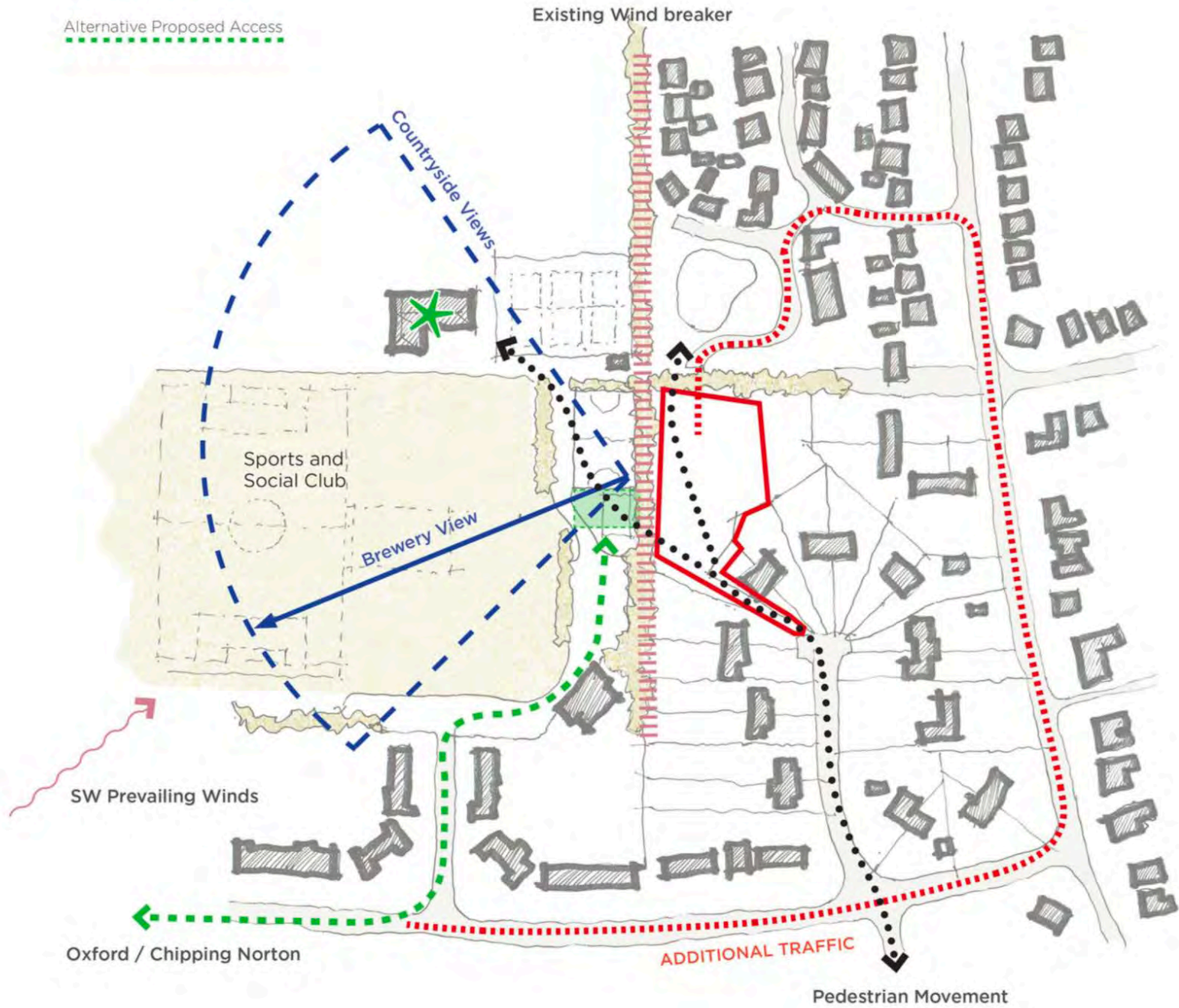
Thoughts on new build.....a place



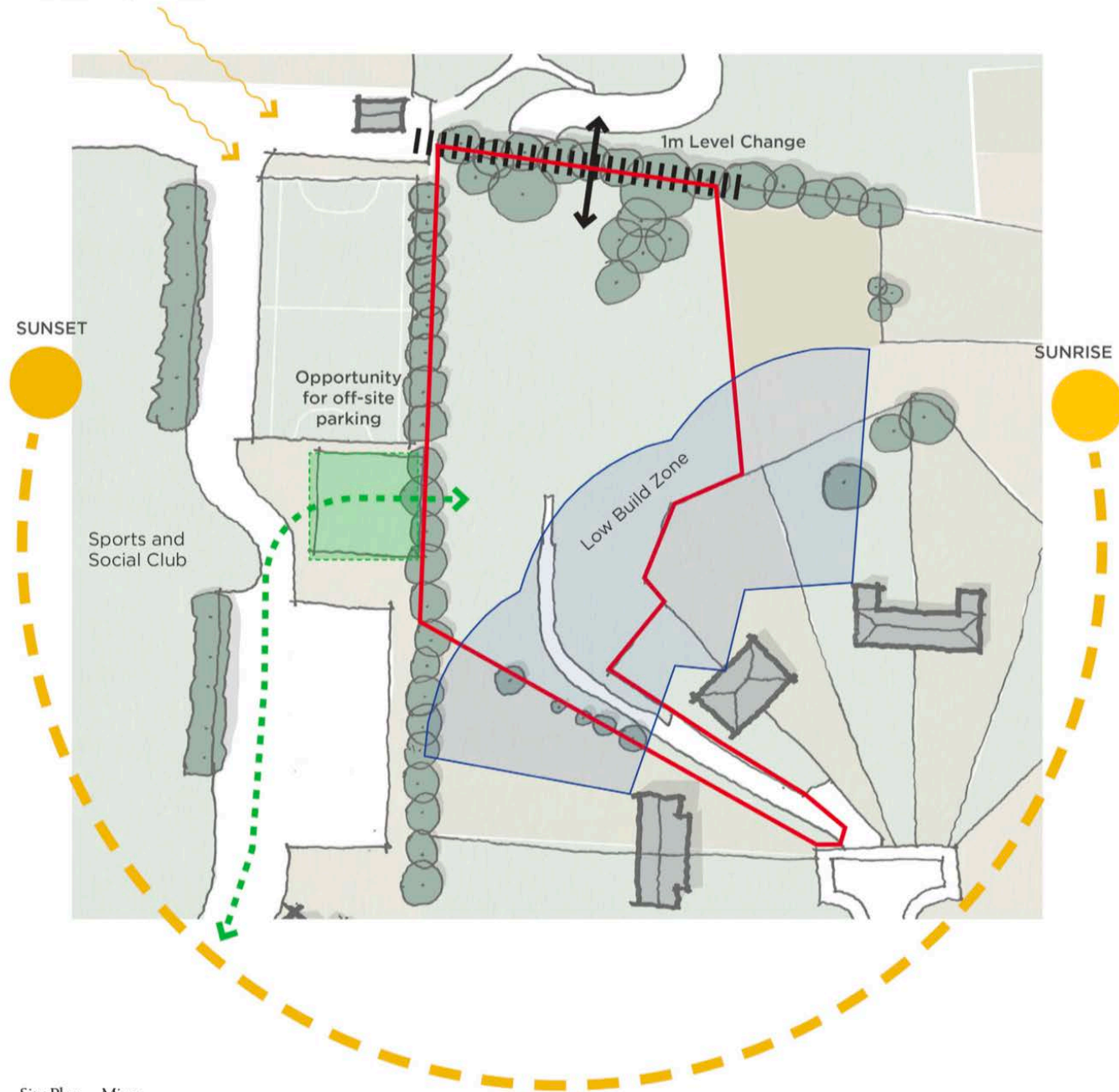
Current Proposed Access

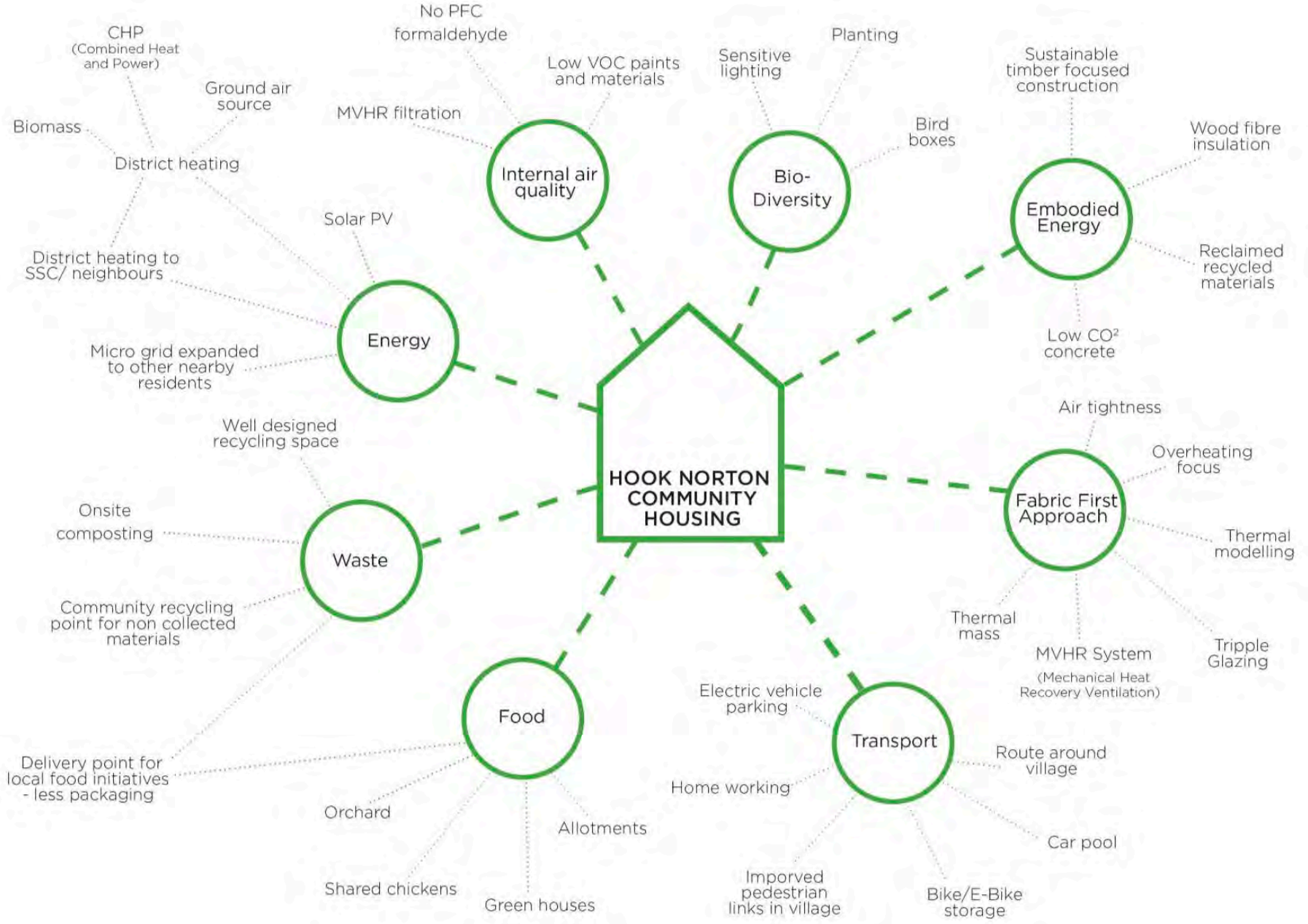


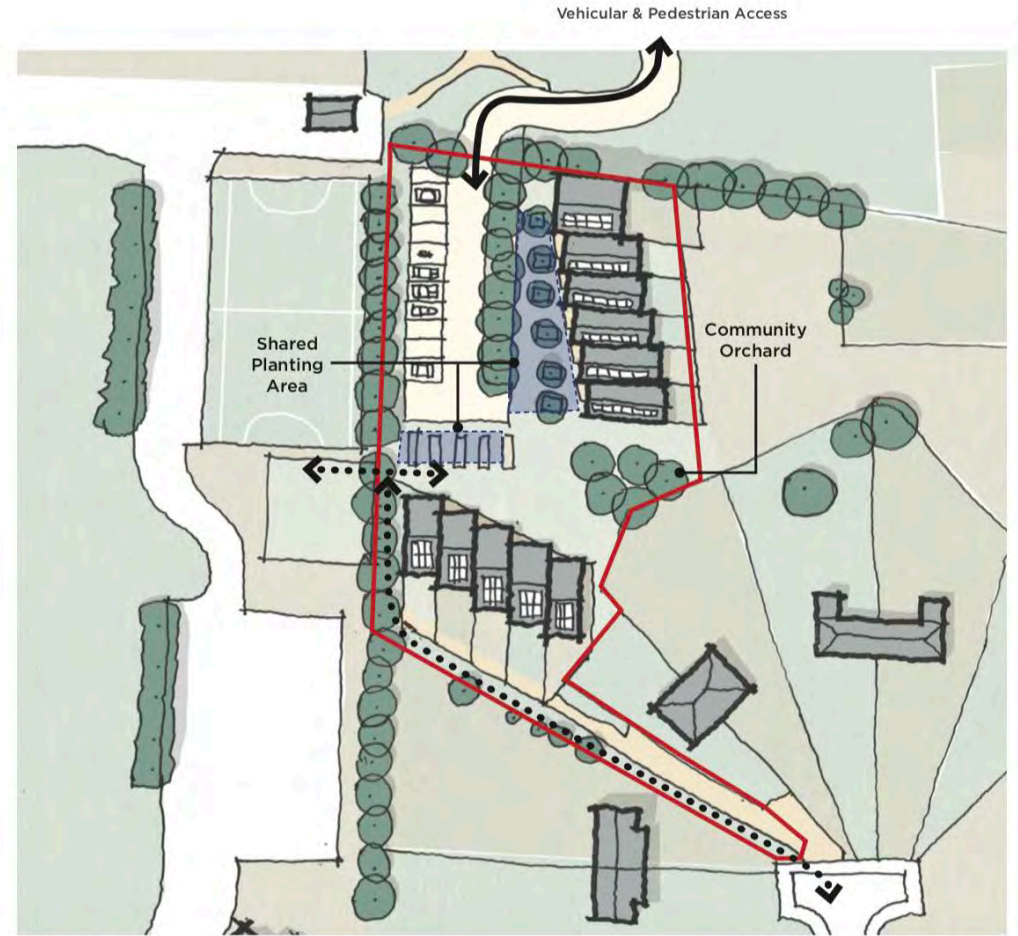
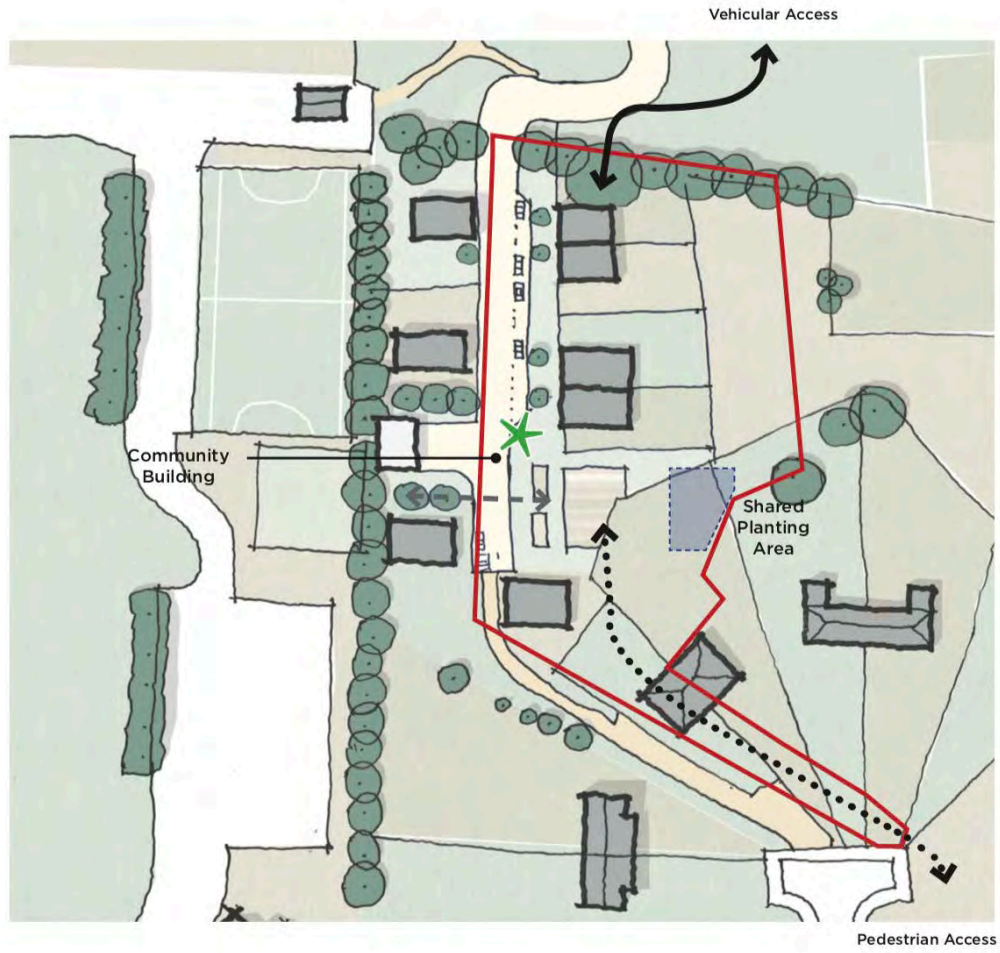
Alternative Proposed Access

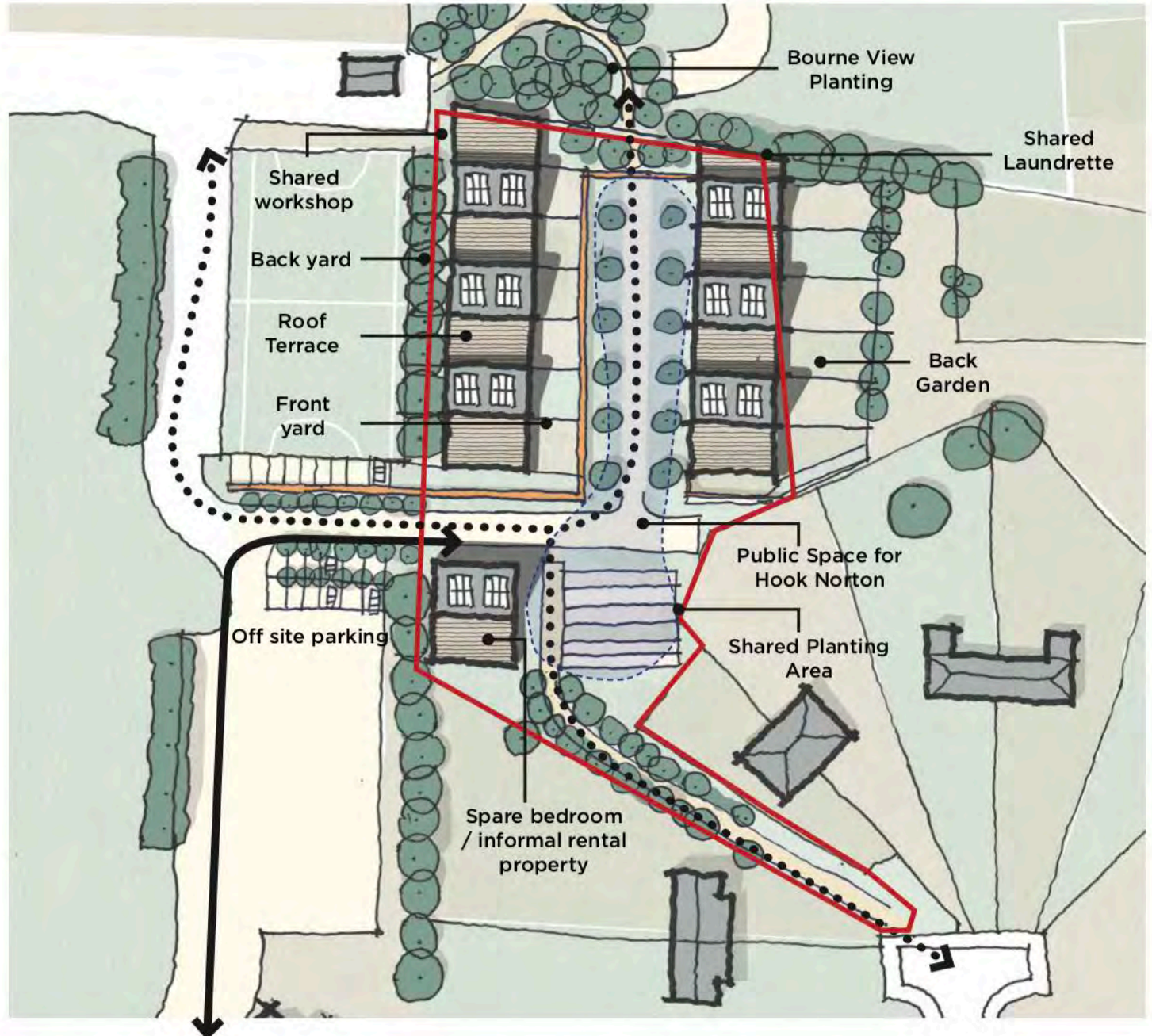


Potential Light Pollution



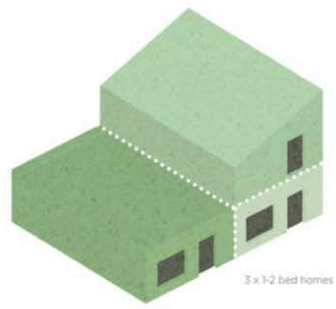






Vehicular Access





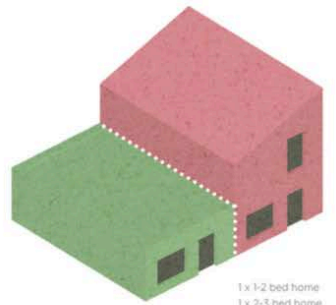
3 x 1-2 bed homes



7 homes



12 homes



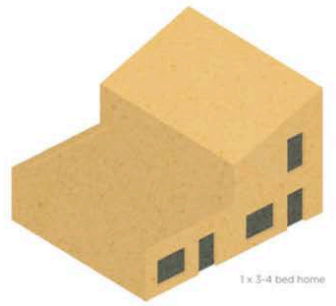
1 x 1-2 bed home
1 x 2-3 bed home



13 homes



14 homes



1 x 3-4 bed home

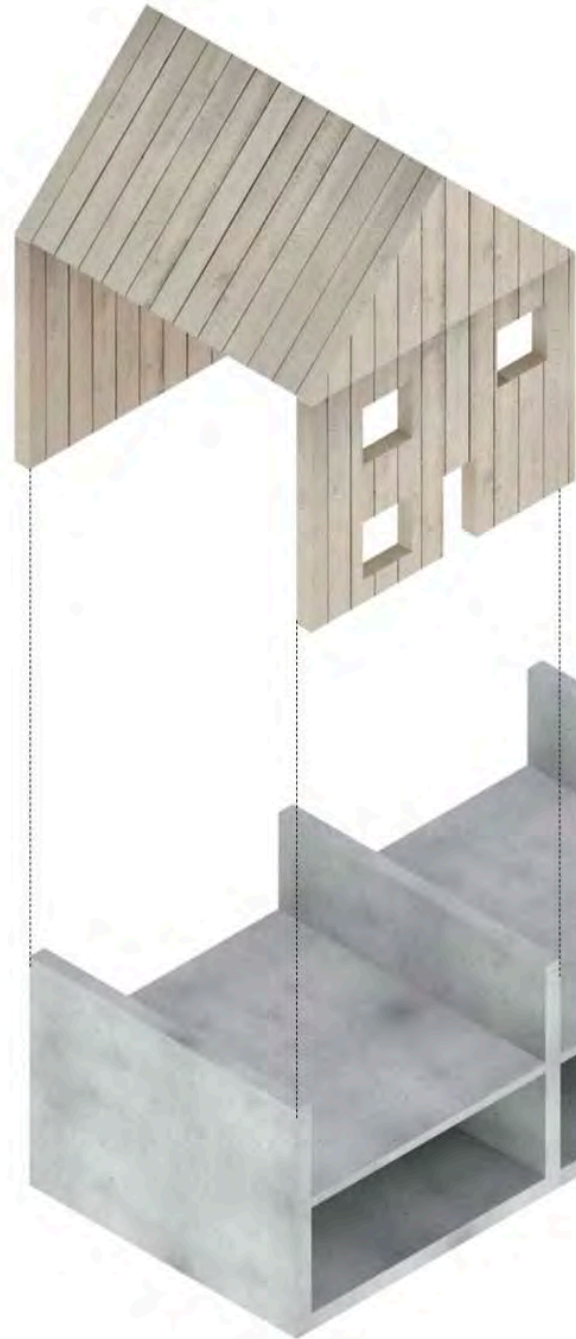


16 homes



21 homes

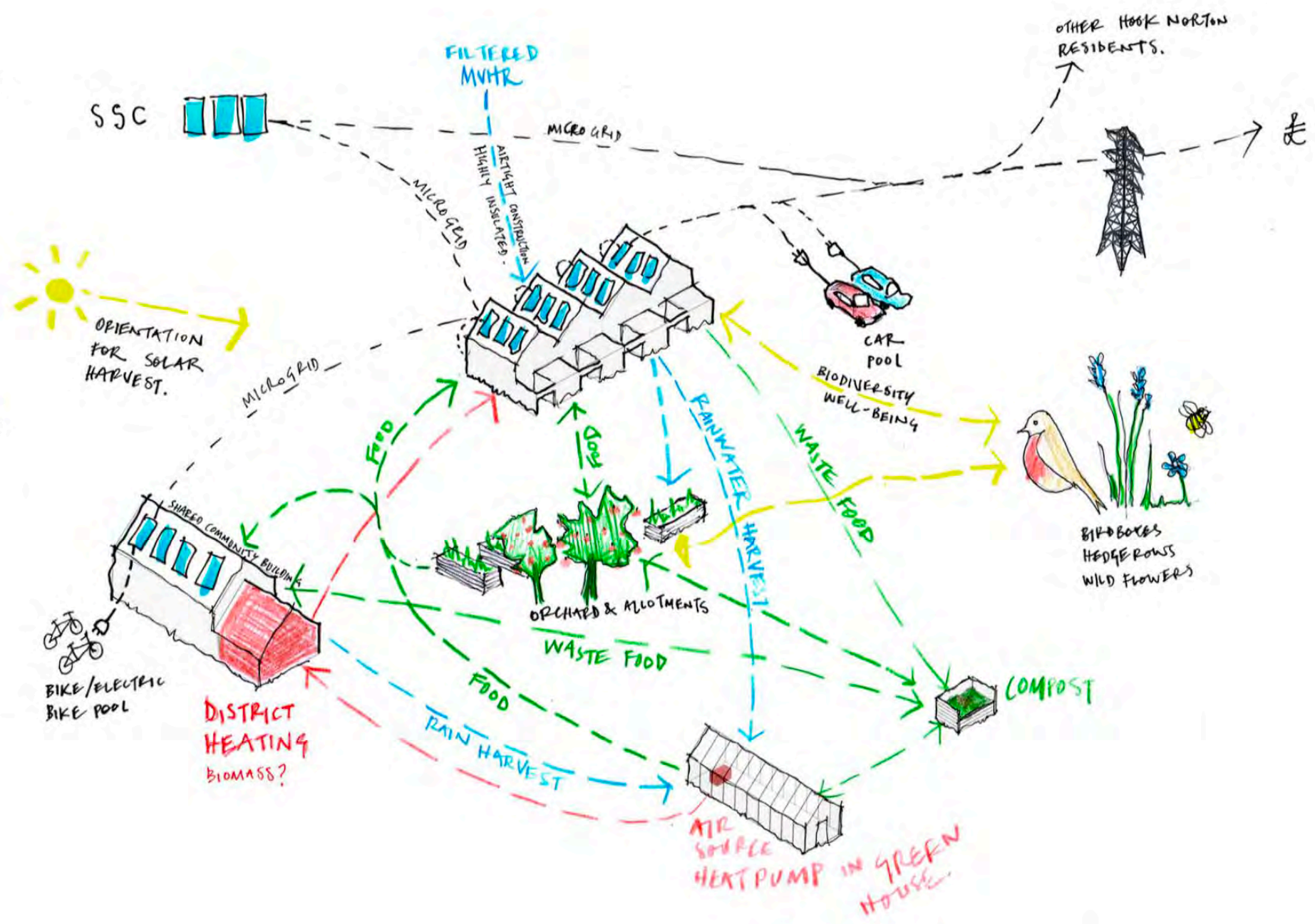
-  = 1-2 bed home
-  = 2-3 bed home
-  = 3-4 bed home



Lightweight facades and roofs for high insulative performance. Use of timber structure is a carbon sink. 'Sweat Equity' would also allow for the use of recycled/re-used materials and the labour intensive preparation often required to process such materials - for example removing nails from old boards.

Heavyweight party walls and 'German' (heavyweight) floors for very good acoustic separation and high thermal mass. Concrete to have locally sourced (possibly recycled) aggregate and high GGBS (ground granulated blast furnace slag) content.

d





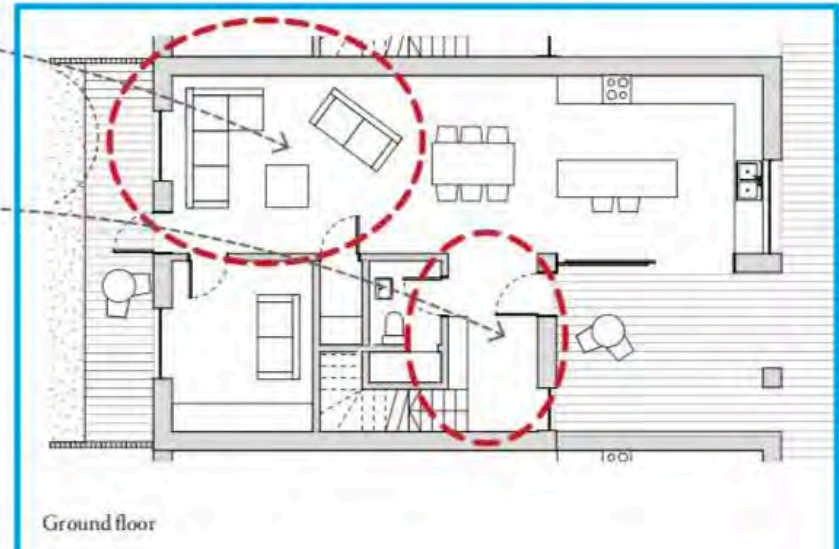
Large option



Unit: 2 bed apartment



Unit: 3-4 bedroom house



Unit: 1 bed apartment



Units reconfigured



