

People Powered Retrofit

Supporting quality retrofit in the RMI (repairs/maintenance/improvements) sector

Aneaka Kellay, Carbon Co-op



Who are Carbon Co-op?

People Powered Retrofit - background

Householder barriers to retrofit

Retrofit 'end-to-end' service

Share + check ideas around contractor engagement

Our work with supply chain in GM





Retrofit

Smart Energy

Creative policy/citizen
engagement

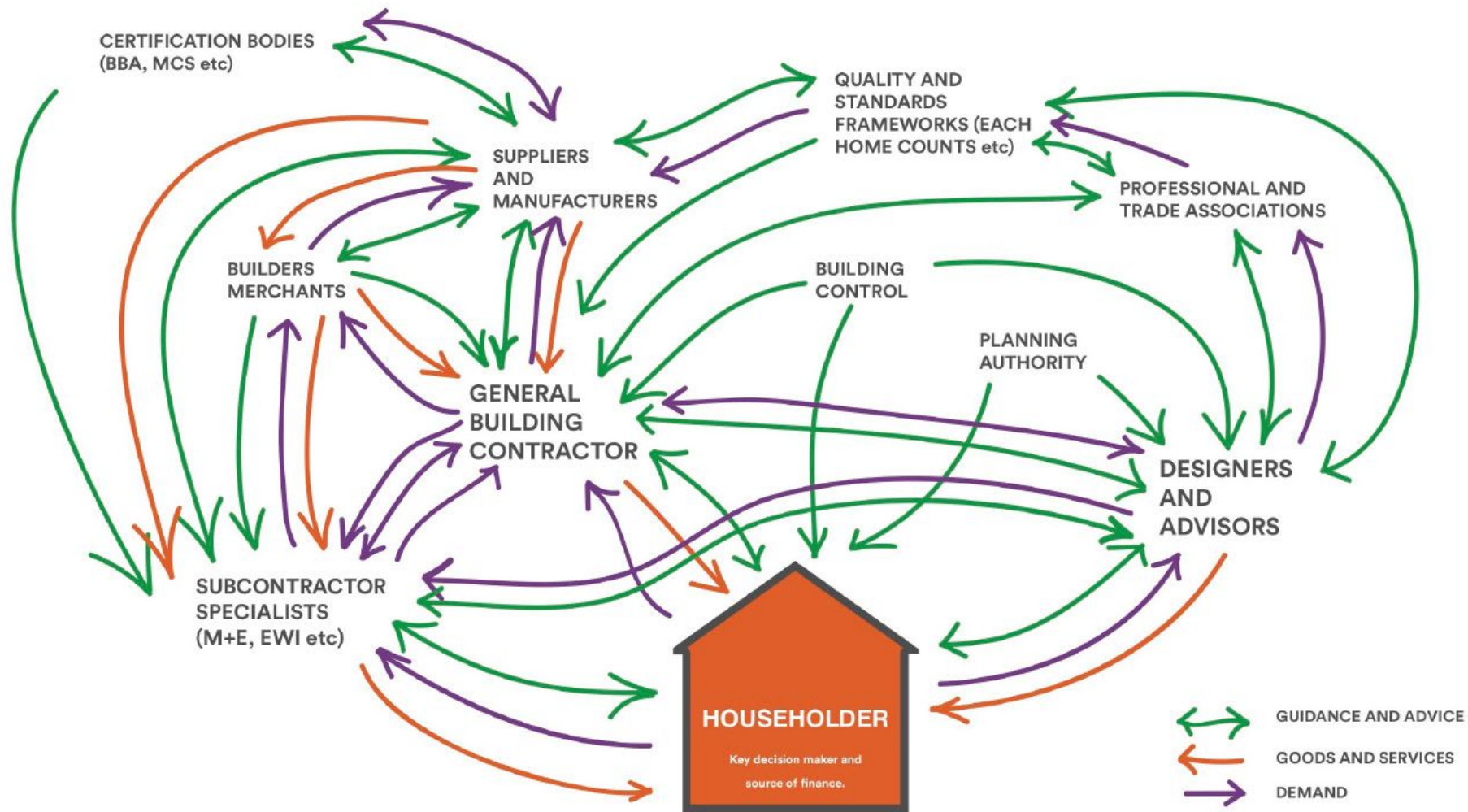
Municipalities

Energy Justice

Open Source

Member organisation

PEOPLE
POWERED
RETROFIT



What stalls a householders retrofit project?

Technical complexity and knowledge

Making key decisions

Finding contractors

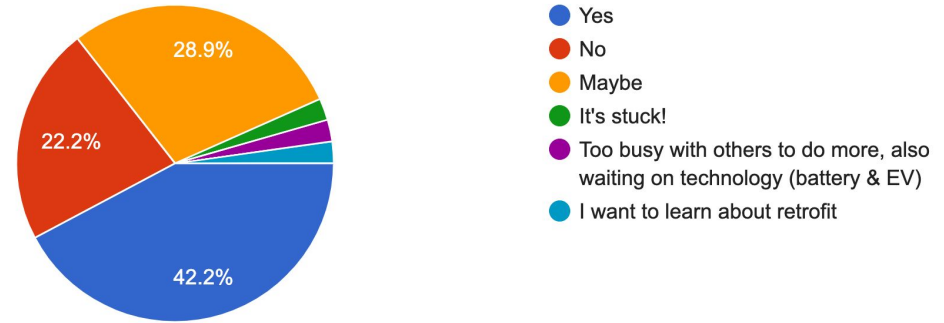
Trust

Worries about risk and quality

(Finance - not so much of an issue)

Is your retrofit project stuck, delayed or not currently moving forward?

45 responses

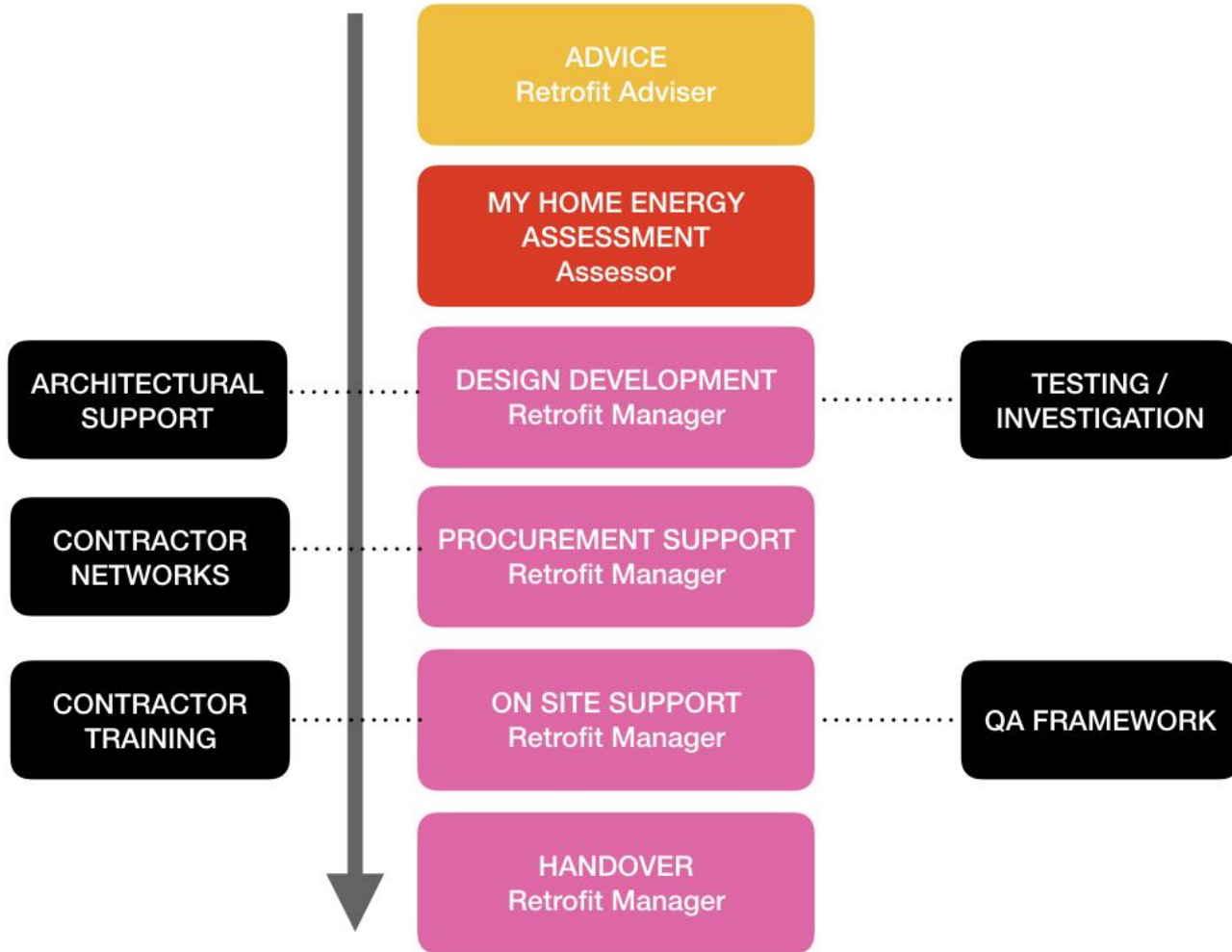
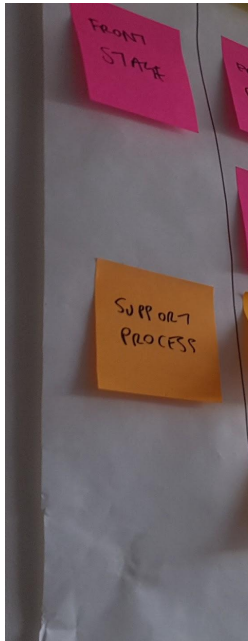


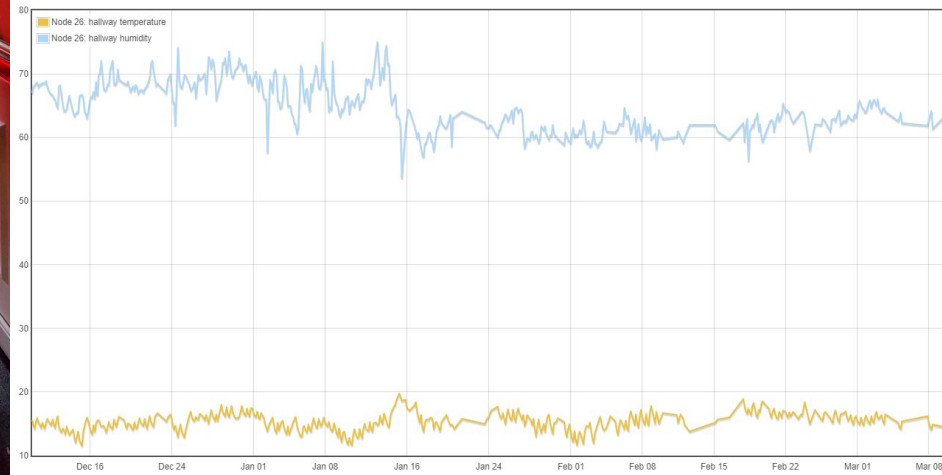
Carbon Co-op member survey, Nov 2018

“I know there’s a lot that I don’t know and I really don’t want to learn it...”

“...I know some Carbon Coop people love doing all the calculations but for those of us who just want a retrofitted home it has to be almost a package you can buy off the shelf.”

Carbon Co-op Member interviews - February 2019





Learning

Non specialists do energy efficiency work

Involve builders in purpose + outcomes

Pride is key! But - not everyone will be interested.

Onsite practical training

Use testing as an opportunity for training.

Keep positive!

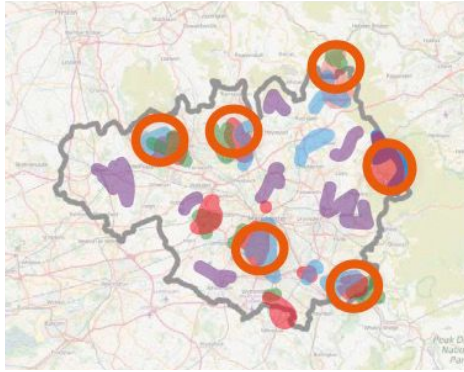


Questions for you:

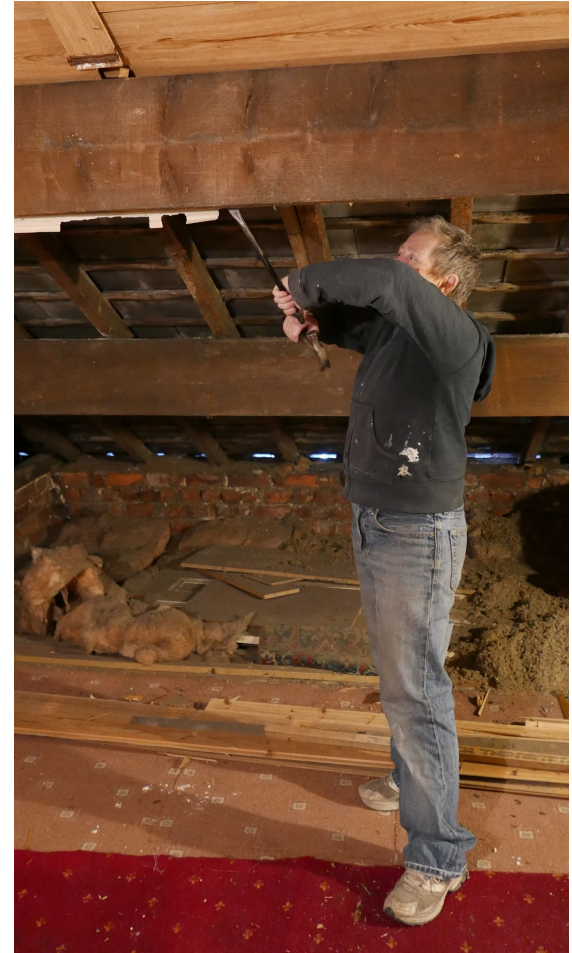
Can you think of a project in which you have you worked with a very engaged builders/subcontractor?

Can you think of a project in which the builder/subcontractor was just not interested?

What made the difference?



PEOPLE POWERED RETROFIT



What are we doing in GM?

- Instigating an informal trades network in GM
- Onsite training and QA support - via 'builder champions'
- Onsite Contractor Air Tightness Champion
- Devising a QA process loosely based on PAS2035
- Using photos at specific QA checkpoints
- Coordinate airtightness and thermography tests
- Support householder to collect baseline and ongoing energy data



Questions?

Aneka Kellay, Carbon Co-op
aneaka@carbon.coop

