
The floods - a briefing for designers

What designers can do to mitigate against and adapt to flooding incidences

AECB Conference 12th July 2014

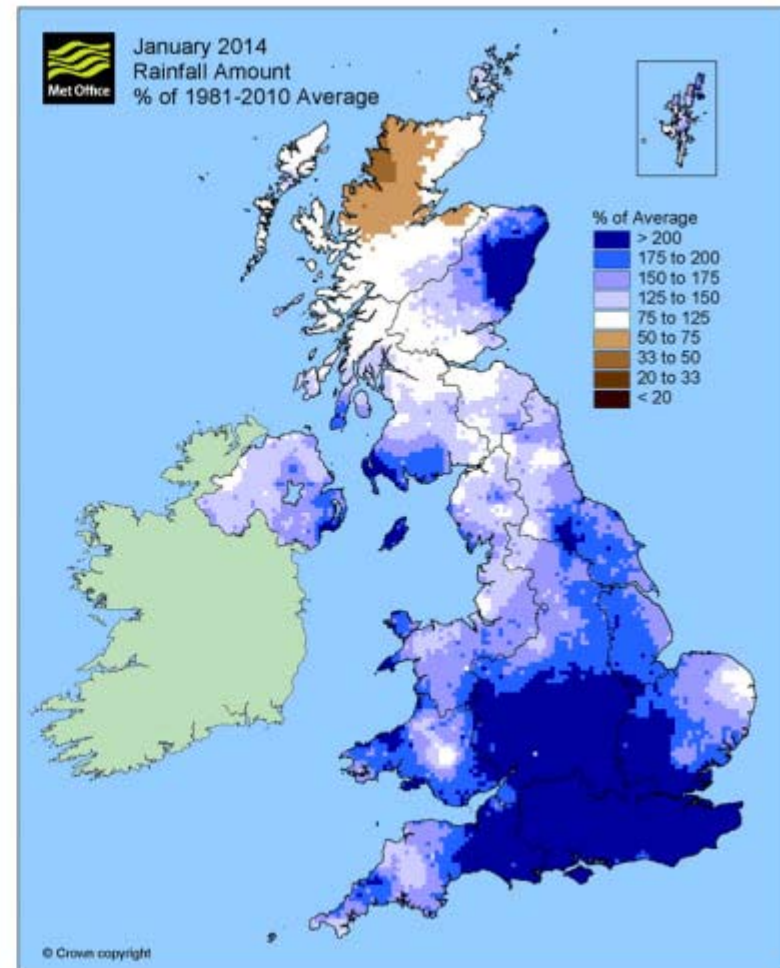
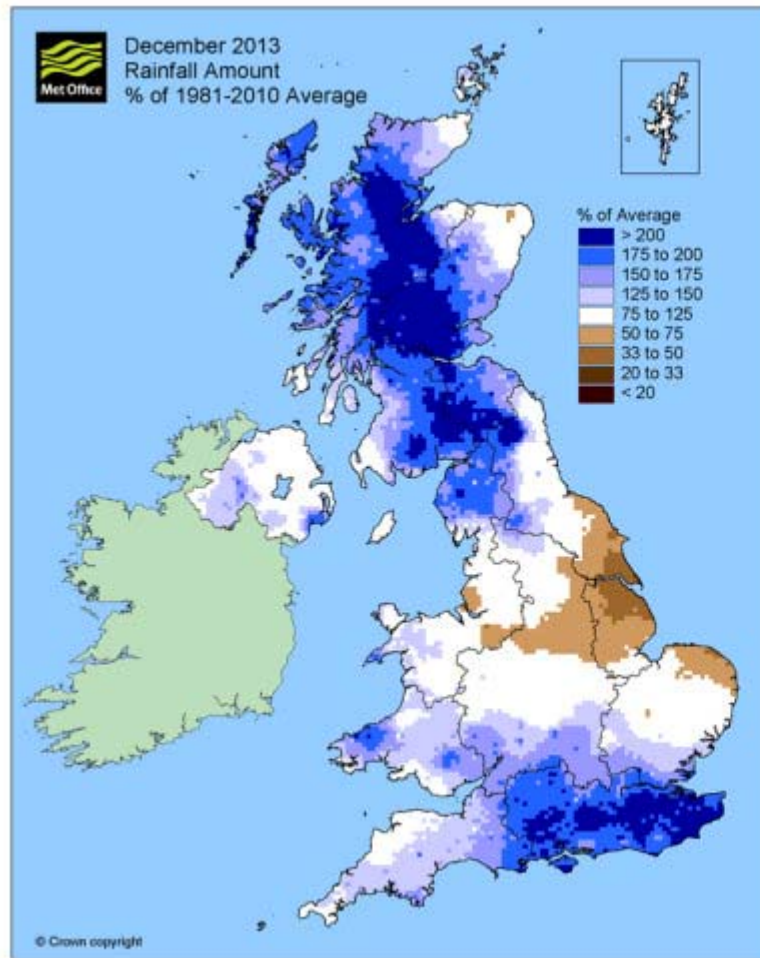
Cath Hassell

cath.hassell@ech2o.co.uk

@CathHassell

ech₂o

You cannot design out this



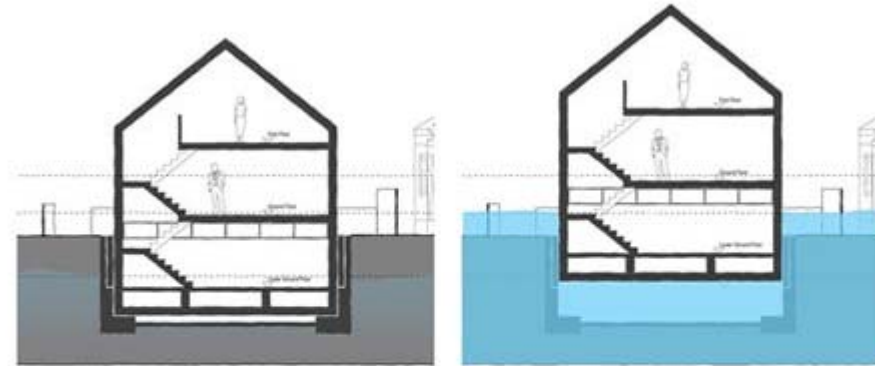
Are floating homes the answer?





www.digitaldesktopwallpaper.com

Not really...



Flood event

COURTESY OF BACA ARCHITECTS



Though nice design by BACA architects

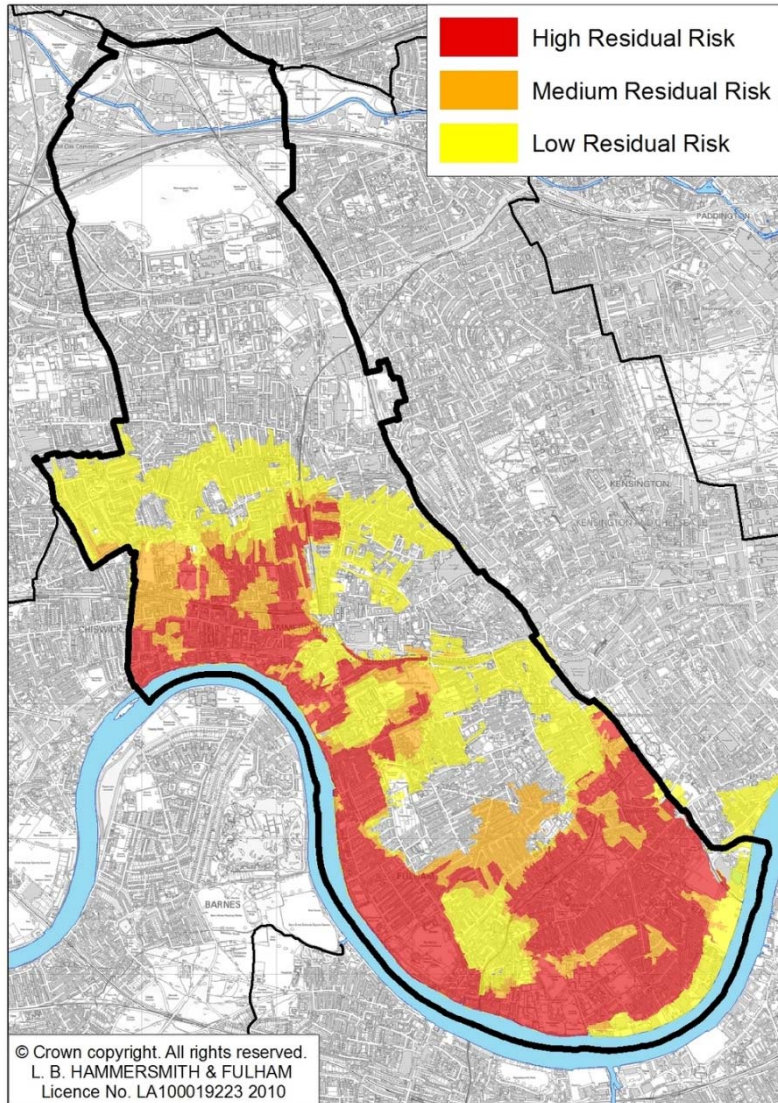
ech₂o

But there is stuff you can do...

Probably best not to build here



Build in Hammersmith and Fulham...



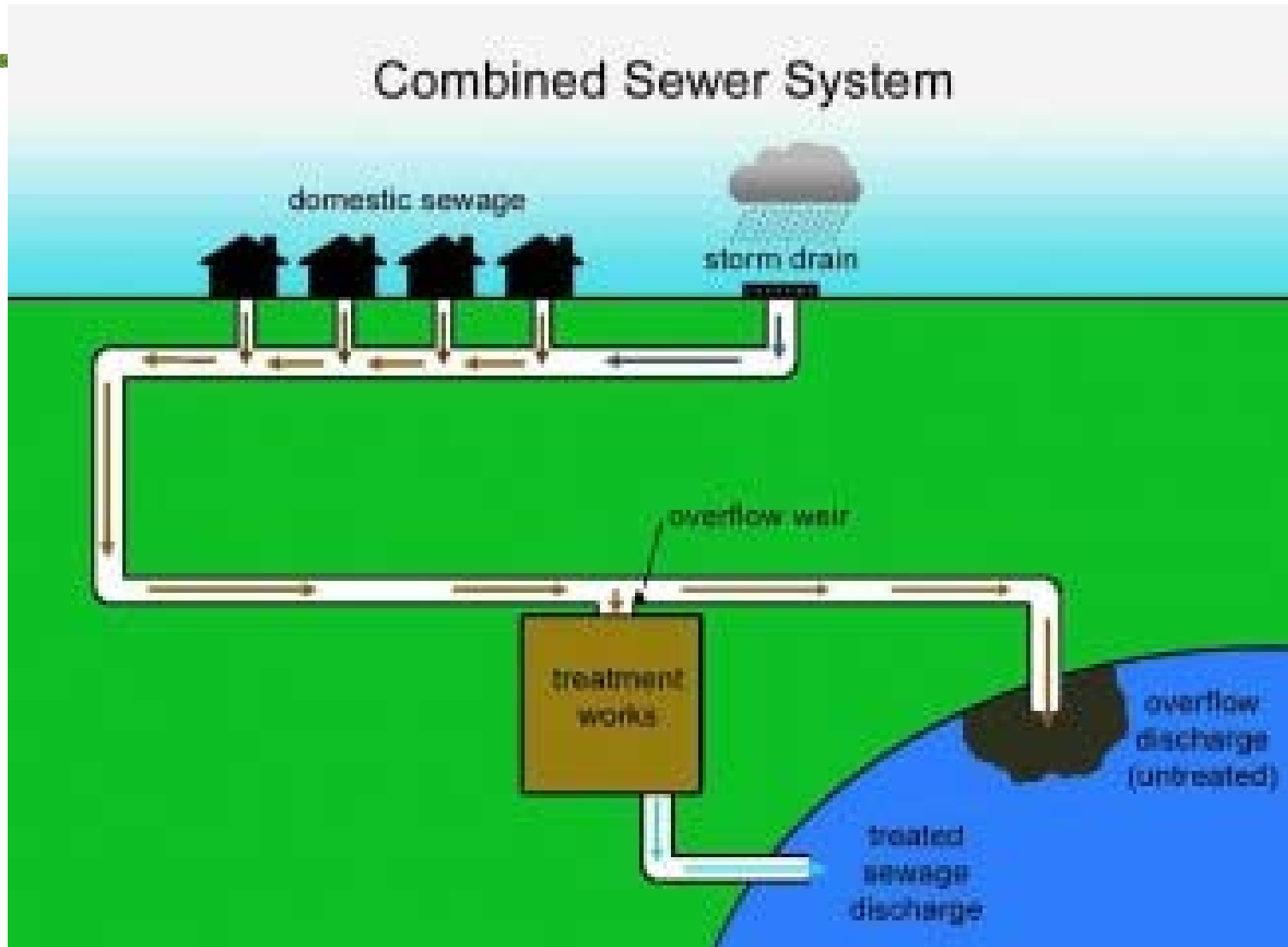
...to take advantage of Kensington and Chelsea's basement policy



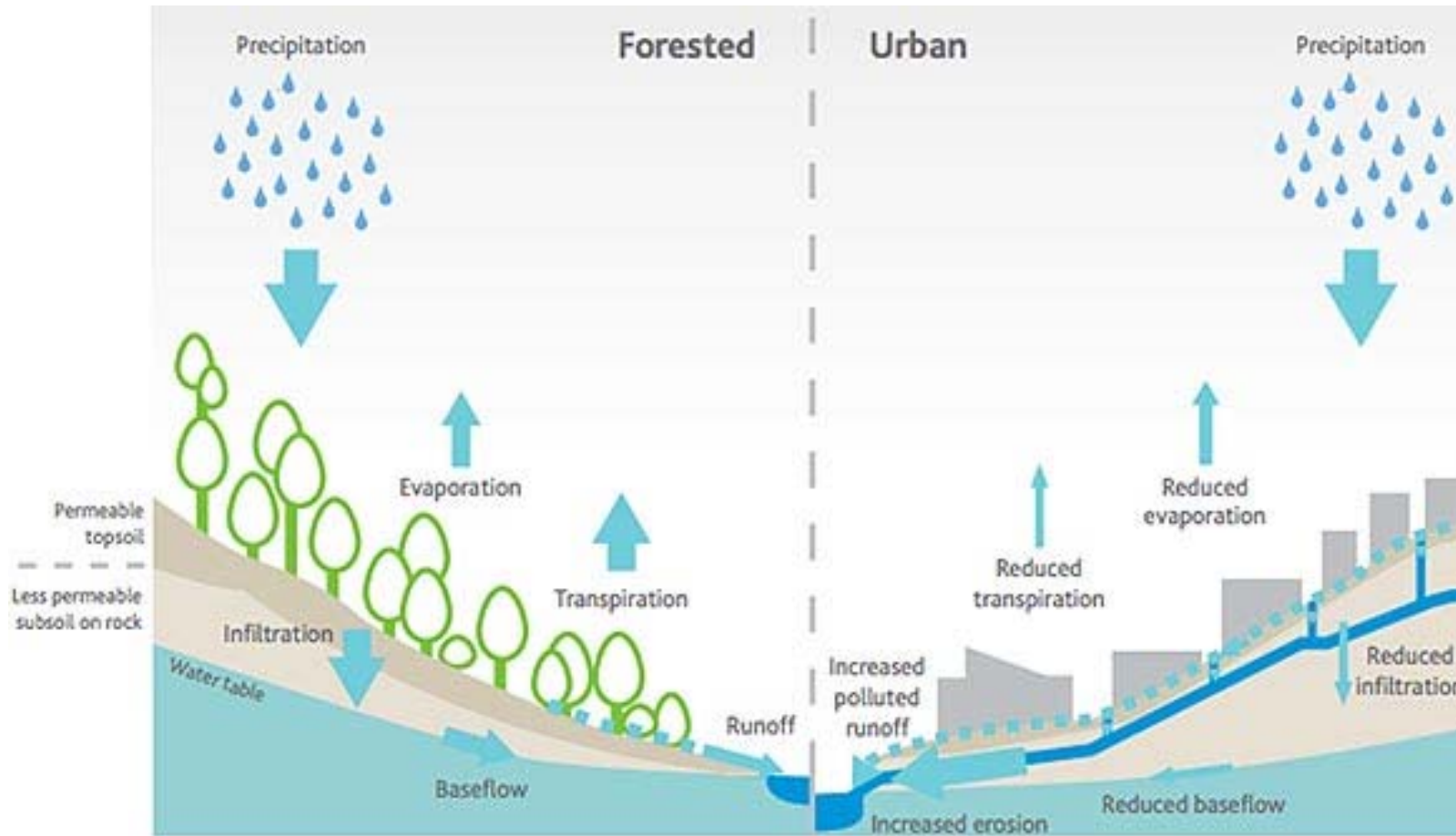
Understand the effect of surface water in combined sewers...



...which are a disaster waiting to happen

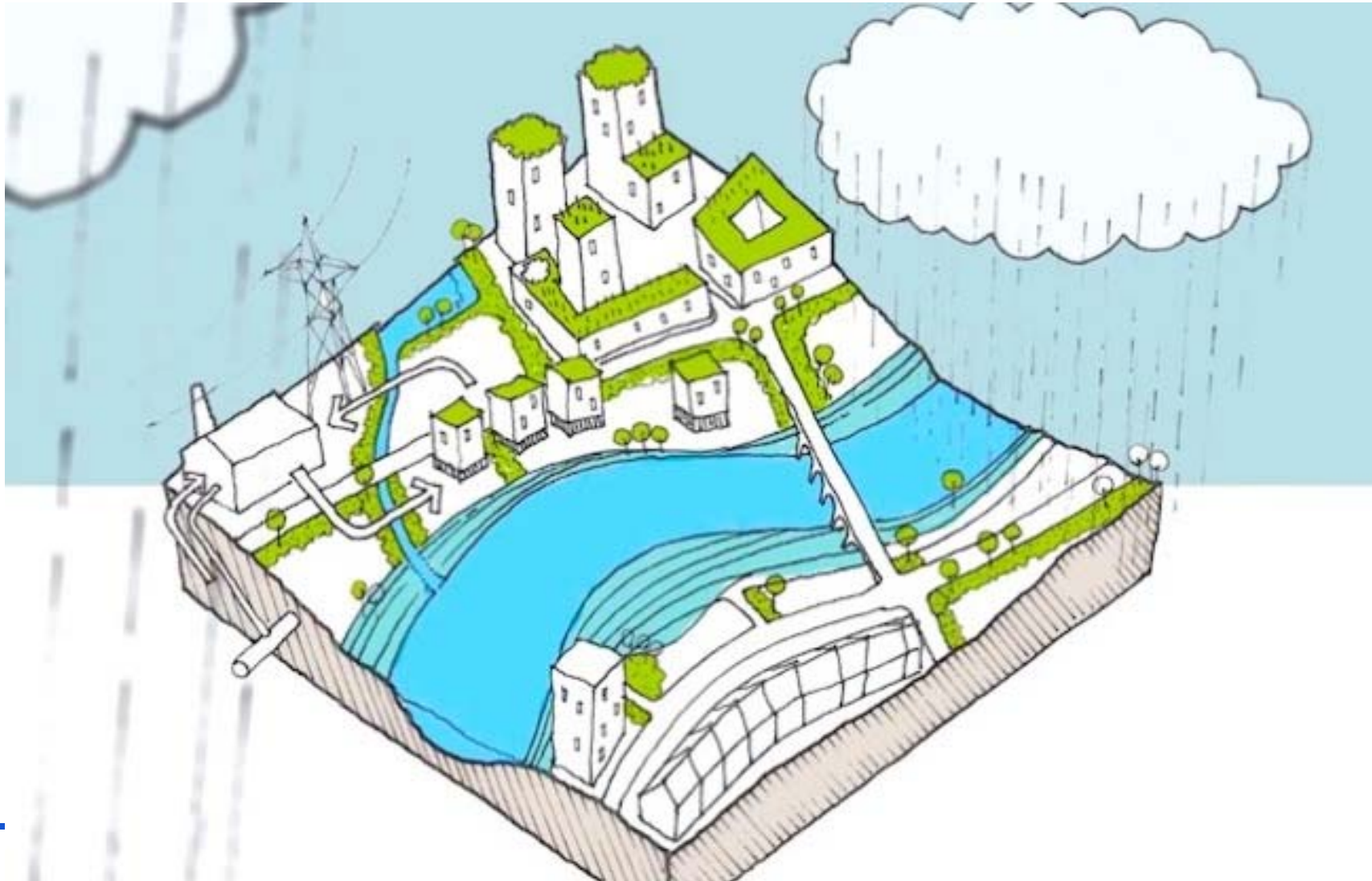


Why we need WSUD



ech₂o

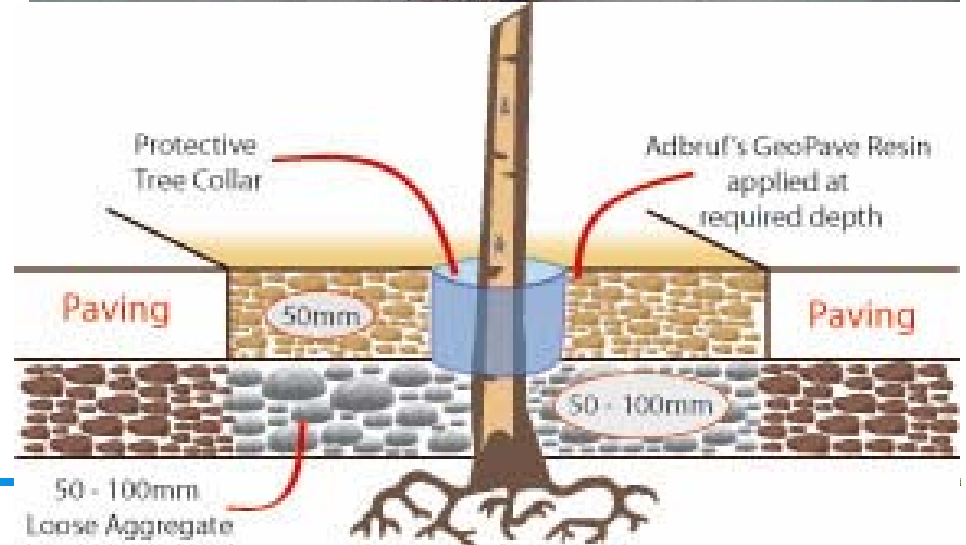
Greening the urban infrastructure



Rain gardens instead of road gullies



Tree pits



Specify SuDS



Decouple gutters from drains



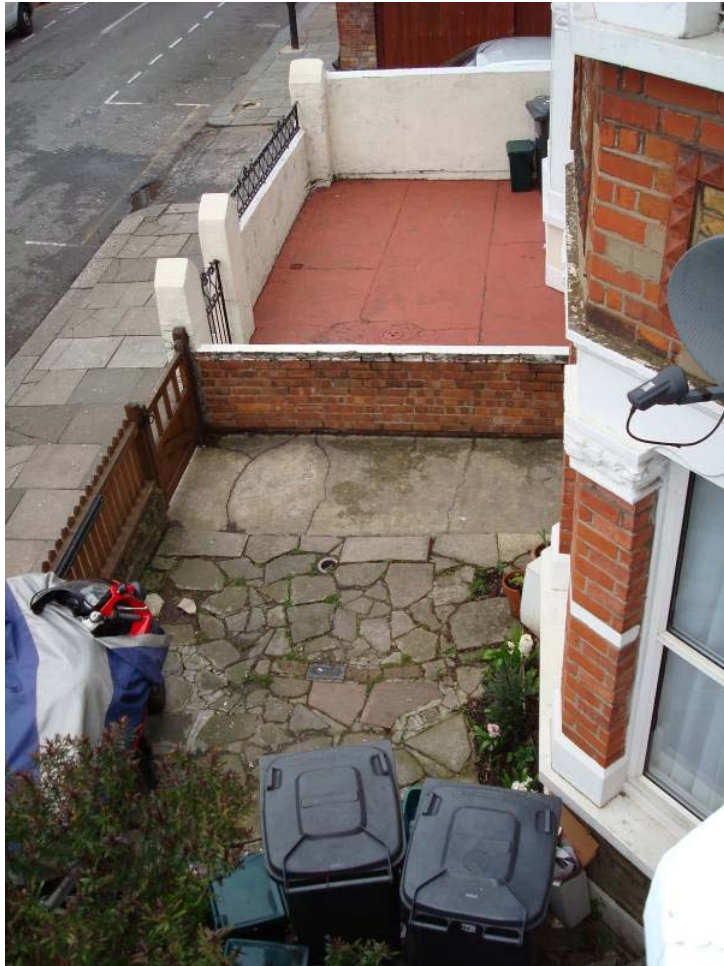
www.raingardens.info

UK rain gardens guide

ech₂o

www.ech2o.co.uk

Sweat the small stuff!



And finally ... specify cold taps only in public toilets!



Who are ech₂o and what do we do?

- We are environmental consultants specialising in sustainable water strategies and low carbon and renewable technologies
- We work in new build or existing buildings
- We work with occupants of the building to change their behaviour as well as identifying the best technological solutions
- Our clients include local authorities, housing associations, schools and colleges, water companies, architects, community groups, and householders

